



# FlameGuard® GripLoc™ Fittings

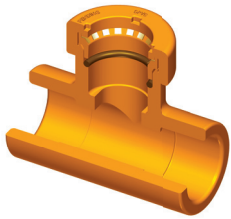
FGGL-2-0616

**SPEARS®**

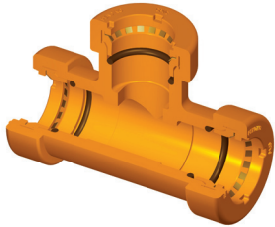
# FlameGuard®

**CPVC FIRE SPRINKLER PRODUCTS**

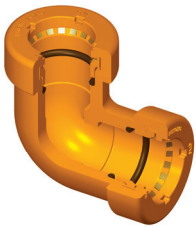
Spears® GripLoc™ Fittings are engineered for maintaining building safety by getting CPVC Fire Sprinkler Systems up and running in the event of needed repair, replacement or modification!



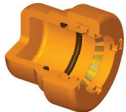
FlameGuard®  
Socket x GripLoc™ Tee



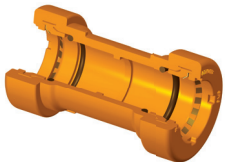
FlameGuard® GripLoc™  
Tee



FlameGuard® GripLoc™  
Elbow



FlameGuard® GripLoc™  
Cap



FlameGuard® GripLoc™  
Coupling



FlameGuard® GripLoc™  
Repair Coupling

## Solutions for Fire Sprinkler Systems...

**Permanent Leak-Free Connections  
Excellent for Quick Repairs  
& System Extensions**

**Uses NO Solvent Cement -  
Reduces System Downtime**

- ✓ Stainless Steel Gripper Ring Permanently Holds Pipe Joint in Place
- ✓ Internal High Grade EPDM O-ring Seals Provides Permanent, Reliable Sealing



NSF® Certified  
Lead-Free



APPROVED

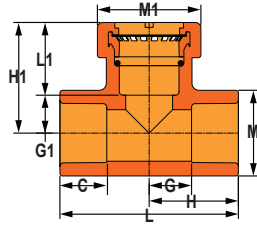
*Progressive Products  
From Spears® Innovation & Technology*

**FlameGuard® Socket x GripLoc™ CPVC Tee -**

**LEAD FREE**

EPDM O-ring

L1 represents pipe insertion depth.



Pressure Rating  
175 PSI (1.21 Mpa)  
@ 150 °F

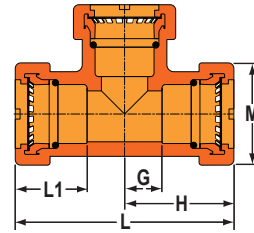
Part Number	Size	C	G	G1	H	H1	L	L1	M	M1	Approx. Wt. (Lbs.)
GLS4201-010	1	1-1/16	15/16	7/8	2	2-9/16	4	1-11/16	1-7/8	2-5/16	.49

**FlameGuard® GripLoc™ CPVC Tee -**

**LEAD FREE**

EPDM O-ring

L1 represents pipe insertion depth.



Pressure Rating  
175 PSI (1.21 Mpa)  
@ 150 °F

Part Number	Size	G	H	L	L1	M	Approx. Wt. (Lbs.)
GL4201-010	1	27/32	2-1/2	5	1-21/32	2-5/16	.65

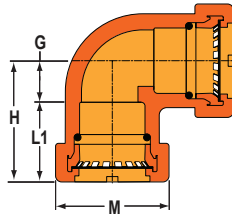
**WARNING: DO NOT INSERT FINGERS**

**FlameGuard® GripLoc™ CPVC Elbow -**

**LEAD FREE**

EPDM O-ring

L1 represents pipe insertion depth.



Pressure Rating  
175 PSI (1.21 Mpa)  
@ 150 °F

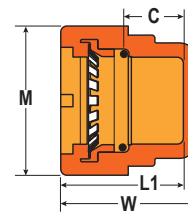
Part Number	Size	G	H	L1	M	Approx. Wt. (Lbs.)
GL4206-010	1	27/32	2-1/2	1-21/32	2-5/16	.38

**FlameGuard® GripLoc™ CPVC Cap -**

**LEAD FREE**

EPDM O-ring

L1 represents pipe insertion depth.



Pressure Rating  
175 PSI (1.21 Mpa)  
@ 150 °F

Part Number	Size	C	L1	M	W	Approx. Wt. (Lbs.)
GL4247-007	3/4	3/4	1-1/2	1-15/16	1-11/16	.12
GL4247-010	1	3/4	1-3/4	2-5/16	2	.19

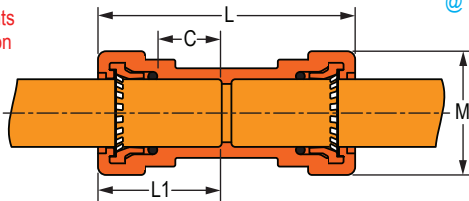
**WARNING: DO NOT INSERT FINGERS**

**FlameGuard® GripLoc™ CPVC Couplings -**

**LEAD FREE**

EPDM O-ring

L1 represents pipe insertion depth.



Pressure Rating  
175 PSI (1.21 Mpa)  
@ 150 °F

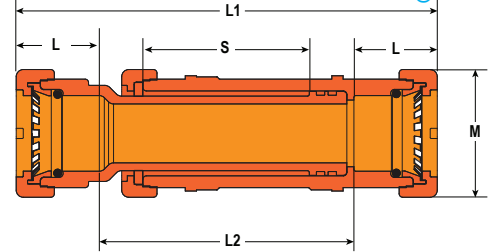
Part Number	Size	C	L	L1	M	Approx. Wt. (Lbs.)
GL4229-007	3/4	1	4-1/16	1-15/16	1-15/16	.25
GL4229-010	1	1	4-3/16	2	2-1/4	.34

**FlameGuard® GripLoc™ CPVC Repair Couplings -**

**LEAD FREE**

EPDM O-ring

L represents pipe insertion depth.



Pressure Rating  
175 PSI (1.21 Mpa)  
@ 150 °F

Part Number	Size	L	L1	L2	M	S	Approx. Wt. (Lbs.)
SG118-07CO	3/4	1-7/16	7-7/16	4-7/16	1-15/16	2-29/32	.60
SG118-10CO	1	1-15/16	7-1/2	4-1/2	2-1/4	2-15/16	.74

**WARNING: DO NOT INSERT FINGERS**

**ENSURE THAT PIPE AND FITTINGS ARE FREE OF DIRT AND DEBRIS PRIOR TO INSTALLATION.**



**SPEARS® MANUFACTURING COMPANY • CORPORATE OFFICE**

15853 Olden St., Sylmar, CA 91342 • PO Box 9203, Sylmar, CA 91392

(818) 364-1611 • www.spearsmfg.com

