



PART 3

Thermoplastic Valves, Strainers & Accessories

Check Valves



Visit our web site:
www.spearsmfg.com

See Spears® On-line Catalog for most current pricing, updated daily.

PRICE SCHEDULE: V-1-0910
Part 3

Effective: September 26, 2010
Supersedes: V-1-1009A



Quality Systems Certificate No. 293
Corporate Facilities, Sylmar, CA
Assessed to ISO 9001: 2008

2010 EDITION

HOW TO USE THIS CATALOG

This catalog Price Schedule has been divided into the four (4) parts listed below for convenience of use according to product type. A complete listing of content for all parts 1 through 4 is located on the following pages.

Part 1: Ball Valves

Part 2: Gate, Globe, Butterfly, Needle & Diaphragm Valves

Part 3: Check Valves

Part 4: Y-Pattern Valves, Strainers, Filters & Gauge Guards

Information has been arranged for easy use in selection of desired products according to product type and configuration options with packaging and pricing information. Individual product dimensions, features and technical data can be found in Spears® Thermoplastic Valves & Accessories Product Guide & Engineering Specifications Publication V-4 and Spears® Actuated Thermoplastic Valves Product Guide & Engineering Specifications Publication AV-4 for electric and pneumatic valve actuation package specifications.

ORGANIZATION

Product types are identified in the Page Heading. While variations exist in format, the typical page layout groups product types in columns by Valve Material with subsections by End Connector option, then sorted in rows by Size. For each row according to valve Size, the part number is located under the O-ring Material column (i.e. EPDM, Viton®) with the List Price in bold print immediately below the part number, followed by packaging and discount code information. Additional technical information and options are listed in the margins.

COLUMN HEADER INFORMATION

Each product column header identifies the following particulars for the selected valve material and end connector option. Again, variations exist according to product type and configurations.

Size	The nominal diameter of the pipe with which the valve is to be used.
Seal Type (i.e., EPDM, Viton®)	Designated elastomer seal (O-ring, Seat, Diaphragm, etc.) NOTE: Part Number and List Price are typically specified under the seal type columns. Certain products may have other column header designations under which part number and pricing are specified in a similar manner.
Standard Pack (Std Pk)	The quantity of parts packaged in an individual box or bag.
Master Pack (Mstr Pk)	The total quantity of parts contained in a single packaging of multiple Standard Packs.
Discount Codes	Identification code for applicable discounts to the product's list price. Note: this is a Product Group code and NOT a calculation of discount. Discount codes are not the same for all products contained in this price schedule.

PRODUCT ILLUSTRATIONS

Photographic illustrations are general representations of valves in a group, but may not be an exact depiction of all configurations listed.

EXAMPLE

Typical Presentation Photo



Socket Style

Pressure Rating
@ 73°F (23°C) Water

1/2" - 4"	235 psi
6" - 8"	150 psi
Flanged	150 psi

Maximum Service Temperature
PVC=140°F (60°C)
CPVC=200°F (93°C)

Temperature/Pressure
De-ratings Apply

Technical Data

Product Type
(Page Heading)

True Union 2000 Industrial Ball Valves

Material	PVC Industrial					
	Size	EPDM	Viton®	Std Pk	Mstr Pk	Disc Code
End Connector	Socket Ends					Part Number
	1/2	1829-005 XX.XX	1829-005 XX.XX	1	18	101
		Price				

CONFIGURATION DESCRIPTIONS

Definitions of abbreviated configuration descriptions follow.

Fipt	Female Iron Pipe Thread
IPS	Iron Pipe Size
Mipt	Male Iron Pipe Thread
Soc	Solvent Weld Socket (IPS)
Spig	Spigot End (IPS)
SR	Special Reinforced Plastic Female Thread
SS	Stainless Steel

DISCOUNT CODES

004	Miscellaneous Specialty Valves PVC CPVC	264	CPVC Tee Valves
026	PVC Utility Swing & Spring Check Valves thru 8"	270	Diaphragm Valves PVC thru 2"
055	PVC Backwater Valves	271	Diaphragm Valves PVC 2-1/2" & Larger
102	PVC Gray Y-Strainers	272	Diaphragm Valves CPVC thru 2"
103	PVC Clear Y-Strainers	273	Diaphragm Valves CPVC 2-1/2" & Larger
104	CPVC Gray Y-Strainers	280	Diaphragm Valves PP thru 2"
108	PVC Swing Check Valves 3/4" - 2"	281	Diaphragm Valves PP 2-1/2" & Larger
109	CPVC Swing Check Valves 3/4" - 2"	289	Butterfly Check Valves PVC thru 12"
110	PVC Swing Check Valves 2-1/2" & Larger	290	Butterfly Check Valves CPVC thru 12"
111	CPVC Swing Check Valves 2-1/2" & Larger	295	T-Filter & Basket Strainer PVC 3" thru 12"
112	PP Swing Check Valves 2-1/2" & Larger	296	T-Filters CPVC
113	PP Swing Check Valves 3/4" - 2"	297	T-Filter & Basket Strainer CPVC 3" thru 12"
200	Gate Valves PVC thru 2"	299	Valve Accessories, Repair Kits, Components
201	Gate Valves PVC 2-1/2" & Larger	558	PVC True Union 2000 Industrial Ball Check Valves 6"
202	Gate Valves CPVC thru 2"	559	CPVC True Union 2000 Industrial Ball Check Valves 6"
203	Gate Valves CPVC 2-1/2" & Larger	600	PVC True Union 2000 Industrial Ball Valves 1/2" thru 2"
210	Compact Ball Valves PVC thru 2"	601	PVC True Union 2000 Industrial Ball Valves 2-1/2" thru 4"
211	Compact Ball Valves PVC 3", 4" & 6"	602	CPVC True Union 2000 Industrial Ball Valves 1/2" thru 2"
212	Compact Ball Valves CPVC thru 2"	603	CPVC True Union 2000 Industrial Ball Valves 2-1/2" thru 4"
213	Compact Ball Valves CPVC 3", 4" & 6"	604	PVC True Union 2000 Industrial Ball Check Valves 1/2" thru 2"
214	Utility Ball Valves PVC 3", 4" & 6"	605	PVC True Union 2000 Industrial Ball Check Valves 2-1/2" thru 4"
215	Utility Ball Valves PVC thru 2"	606	CPVC True Union 2000 Industrial Ball Check Valves 1/2" thru 2"
216	Utility Ball Valves CPVC thru 2"	607	CPVC True Union 2000 Industrial Ball Check Valves 2-1/2" thru 4"
218	Lab & Needle Valves PVC	608	PVC True Union 2000 Standard Ball Valves 1/2" thru 2"
219	Lab & Needle Valves CPVC & PP	609	PVC True Union 2000 Standard Ball Valves 2-1/2" thru 4"
220	PVC True Union Ball Check Valve thru 4"	610	CPVC True Union 2000 Standard Ball Valves 1/2" thru 2"
221	PVC True Union Ball Check Valve 6" & Larger	611	CPVC True Union 2000 Standard Ball Valves 2-1/2" thru 4"
222	CPVC True Union Ball Check Valves thru 4"	612	PVC True Union 2000 Industrial Ball Valves 6"
223	CPVC True Union Ball Check Valves 6" & Larger	613	CPVC True Union 2000 Industrial Ball Valves 6"
230	PVC True Union Ball Valve thru 4"	615	PVC Horizontal & Vertical 3-Way Ball Valves
231	PVC True Union Ball Valve 6" & Larger	617	CPVC Horizontal & Vertical 3-Way Ball Valves
232	CPVC True Union Ball Valve thru 4"	620	PVC Standard Globe & Y-Pattern Valves 1/2" thru 4"
233	CPVC True Union Ball Valve 6" & Larger	621	PVC Clear Globe & Y-Pattern Valves 1/2" thru 4"
240	Single Entry Ball Valves PVC thru 4"	622	CPVC Standard Globe & Y-Pattern Valves 1/2" thru 4"
250	Butterfly Valves PVC thru 12"	624	Gauge Guard - PVC
251	PVC Butterfly Valves 14" & Larger	625	Gauge Guard - CPVC
252	CPVC Butterfly Valves thru 12"	626	Gauge Guard - Glass Reinforced PP
253	CPVC Butterfly Valves 14" & Larger	627	PVC Y-Check Valves 1/2" thru 4"
254	Butterfly Valves High Purity TFM Lined thru 6"	628	PVC Clear Y-Check Valves 1/2" thru 4"
256	Butterfly Valves PP thru 12"	629	CPVC Y-Check Valves 1/2" thru 4"
257	Butterfly Valves PP 14" & Larger	901	Miscellaneous Components
260	Pool Butterfly Valve, Manual 1-1/2" thru 8"		
261	Pool Butterfly Valve, Gear Operator 1-1/2" thru 12"		
263	PVC Tee Valves		

CONTENT

Part 1: Ball Valves

Catalog Information, How To Use This Catalog, Organization, Column Header Information, Product Illustrations.....	I
Configuration Descriptions, Discount Codes	II
Content	III
PVC True Union 2000 Industrial Ball Valves	1
PVC 6" Industrial T-Handle Valve Option (Non-Locking)	2
CPVC True Union 2000 Industrial Ball Valves	3
CPVC 6" Industrial T-Handle Valve Option (Non-Locking)	4
PVC True Union 2000 Industrial Vented/Bleach Ball Valves	5
CPVC True Union 2000 Industrial Vented/Bleach Ball Valves.....	6
True Union 2000 Industrial 3-Way Ball Valves.....	7
PVC & CPVC True Union 2000 Industrial 3-Way Horizontal Diverter Ball Valves	8
PVC Vertical 3-Way Ball Valves.....	9
CPVC Vertical 3-Way Ball Valves	10
PVC Mainline Tee-Style "Zero Dead-Leg" Ball Valves.....	12
CPVC Mainline Tee-Style "Zero Dead-Leg" Ball Valves	13
PVC & CPVC Metric Tee-Style "Zero Dead-Leg" Ball Valves	13
PVC True Union 2000 Standard Ball Valves	14
CPVC True Union 2000 Standard Ball Valves	15
PVC & CPVC True Union 2000 Industrial Retrofit Ball Valves - Replaces Other Brand Valves	16
PVC & CPVC True Union 2000 Industrial Retrofit Ball Valves - Replaces Spears® "Regular Style" Valves	17
PVC & CPVC True Union 2000 Standard Retrofit Ball Valves - Replaces Other Brand Valves	18
PVC & CPVC True Union 2000 Standard Retrofit Ball Valves - Replaces Spears® "Regular Style" Valves	19
PVC True Union Ball Valves (Regular Style)	20
CPVC True Union Ball Valves (Regular Style)	21
PVC & CPVC Compact 2000 Ball Valves.....	22
PVC Compact Ball Valves (Regular Style)	23
CPVC Compact Ball Valves (Regular Style).....	24
PVC White Single Entry Ball Valves	25
PVC Gray Single Entry Ball Valves	26
PVC White, PVC Gray & CPVC Utility Ball Valves.....	27
PVC & CPVC Lab Ball Valves	28
PVC & CPVC True Union Retrofit Kits - Other Brand Valves	29
PVC & CPVC True Union Retrofit Kits - Older "Regular Style" Spears® Valves	30
PVC & CPVC Supplemental End Connector Sets Threaded Ends	31
PVC & CPVC Supplemental End Connector Sets Socket Ends & Spigot Ends.....	32
Ball Valve Accessories & Repair Kits.....	33

Part 2: Gate, Globe, Butterfly, Needle & Diaphragm Valves

Catalog Information, How To Use This Catalog, Organization, Column Header Information, Product Illustrations.....	I
Configuration Descriptions, Discount Codes	II
Content	III
PVC Gate Valves.....	1
CPVC Gate Valves	2
PVC Plug Gate Valves.....	3
CPVC Plug Gate Valves	4
Gate Valve Accessories & Repair Kits.....	5
PVC & CPVC Globe Valves, PVC & CPVC Internal Repair Kits	6
High Purity TFM-Lined Butterfly Valves TFM-Lined Viton® O-ring Seal	7
PVC Butterfly Valves	8
CPVC Butterfly Valves.....	9
PVC Lug Butterfly Valves - Zinc Plated Lug Inserts	10
CPVC Lug Butterfly Valves - Zinc Plated Lug Inserts.....	11
PVC Lug Butterfly Valves - Stainless Steel Lug Inserts.....	12
CPVC Lug Butterfly Valves - Stainless Steel Lug Inserts	13
PVC True Lug Butterfly Valves - Zinc Plated Lugs	14
CPVC True Lug Butterfly Valves - Zinc Plated Lugs.....	15
PVC True Lug Butterfly Valves - Stainless Steel Lugs	16
CPVC True Lug Butterfly Valves - Stainless Steel Lugs.....	17
Polypropylene Butterfly Valves	18
Large Diameter Polypropylene Butterfly Valves	19
PVC Pool Butterfly Valves	20
PVC Wafer Butterfly Valves	21
CPVC Wafer Butterfly Valves	22
Butterfly Valve Accessories & Repair Kits	23
PVC, CPVC & PP Globe and Angle Pattern Needle Valves.....	35
Diaphragm Valves	36
PVC Diaphragm Valves	37
CPVC Diaphragm Valves	38
PP Diaphragm Valves.....	39
Tee-Style "Zero Dead-Leg" Diaphragm Valves.....	41
Diaphragm Valve Repair Kits.....	42

Part 3: Check Valves

Catalog Information, How To Use This Catalog, Organization, Column Header Information, Product Illustrations.....	I
Configuration Descriptions, Discount Codes.....	II
Content.....	III
PVC True Union 2000 Industrial Ball Check Valves.....	1
CPVC True Union 2000 Industrial Ball Check Valves.....	2
Foot Valve Screens.....	4
PVC True Union Ball Check Valves (Regular Style).....	5
CPVC True Union Ball Check Valves (Regular Style).....	6
PVC, CPVC & PP Industrial Swing Check Valves.....	7
PVC, CPVC & PP Swing Check Valves With Arrow Indicator, PVC, CPVC & PP Swing Check Valves With Counter Balance.....	8
Industrial Swing Check Valve Repair Kits.....	10
PVC White & PVC Clear Utility Swing Check Valves.....	11
PVC White & PVC Clear Compression Utility Swing Check Valves, Compression Coupling Nut Wrenches & Nut Wrench Sets.....	12
PVC White & PVC Clear True Union Utility Swing Check Valves.....	13
PVC White & PVC Clear Utility Spring Check Valves.....	14
PVC White & PVC Clear True Union Utility Spring Check Valves.....	15
PVC In-line Adjustable Spring Check Valves.....	16
PVC & CPVC Diaphragm Check Valves.....	17
PVC Y-Check Valves.....	18
PVC Clear & CPVC Y-Check Valves.....	19
PVC & PVC Clear Y-Check Valves True Union Ends.....	20
CPVC Y-Check Valves True Union Ends.....	21
Y-Check Valve Repair Kits.....	22
PVC Butterfly Check Valves.....	23
CPVC Butterfly Check Valves.....	24
PVC & CPVC Butterfly Check Valve Repair Kits.....	26
PVC Backwater Valves.....	27

Part 4: Y-Pattern Valves, Strainers, Filters & Gauge Guards

Catalog Information, How To Use This Catalog, Organization, Column Header Information, Product Illustrations.....	I
Configuration Descriptions, Discount Codes.....	II
Content.....	III
PVC Y-Pattern Valves.....	1
PVC Clear & CPVC Y-Pattern Valves.....	2
PVC & PVC Clear Y-Pattern True Union Ends.....	3
CPVC Y-Pattern True Union Ends.....	4
PVC & CPVC Y-Pattern Valve Repair Kits.....	5
Y-Check Valves See V-1 Part 3 - Check Valves.....	6
Y-Strainers.....	7
PVC Y-Strainers.....	8
PVC Clear Y-Strainers.....	9
CPVC Y-Strainers.....	10
PVC Gray True Union Y-Strainers.....	11
PVC Clear True Union Y-Strainers.....	12
CPVC True Union Y-Strainers.....	13
Basket Strainers.....	14
PVC Basket Strainers.....	15
CPVC Basket Strainers.....	16
PVC Suction Strainers.....	18
In-line Tee-Style Filters.....	19
PVC Gray Reverse Tee Filter Stainless Steel Screen, CPVC Tee Filter Stainless Steel Screen.....	20
CPVC Reverse Tee Filter Stainless Steel Screen, Filter Replacement Screens for TF Filters, Filter Replacement Screens for MTF Filters, Reverse Flow Filter Replacement Screens for TFR Filters, Reverse Flow Filter Replacement Screens for MTFR Filters.....	21
PVC Gauge Guards.....	22
CPVC & PP Gauge Guards.....	23
Supplemental Information	
Limited Lifetime Warranty.....	24
Recommendations For Installers And Users.....	25
Electro Series Actuated Ball Valves, Custom Actuated Valve Packages, Standards & Specifications, Spears® Quality Policy.....	26



True Union 2000 Industrial Ball Check Valves



Socket Style

Pressure Rating @ 73°F (23°C), Water

- 1/2" - 4" 235 psi
- 6" - 8" 150 psi
- All Flanged 150 psi

Maximum Service Temperature

- PVC = 140°F (60°C)
- CPVC = 200°F (93°C)

Temperature/Pressure De-ratings Apply

Rated for Vacuum Service

All Valves assembled with Silicone-Free,
Water Soluble Lubricant

Contact Spears® for Pricing & Availability
on Custom Elastomer Seals

See Ball Valve Accessories & Repair Kits Section
for Additional Options and Features

General Installation Information: Ball check valves may be installed in either horizontal or vertical position. A minimum of ten (10) pipe diameters' distance maintained from any pump or other source of turbulence. Check valves MUST be installed with the valve's FLOW arrow pointing in the direction of flow.

PVC Industrial

Size	EPDM	Viton®	Std Pk	Mstr Pk	Disc Code
------	------	--------	--------	---------	-----------

Threaded & Socket Ends

1/2	4529-005 53.54	4539-005 60.34	1	18	604
3/4	4529-007 63.84	4539-007 67.38	1	18	604
1	4529-010 75.93	4539-010 84.64	1	18	604
1-1/4	4529-012 110.88	4539-012 124.45	1	12	604
1-1/2	4529-015 127.35	4539-015 141.34	1	8	604
2	4529-020 173.87	4539-020 193.33	1	8	604

Socket Ends

2-1/2	4522-025 421.53	4532-025 448.95	1	0	605
3	4522-030 536.45	4532-030 601.33	1	0	605
4	4522-040 790.71	4532-040 833.07	1	0	605
6	4522-060 1554.91	4532-060 1723.26	1	0	558
8	4522-080 2072.19	4532-080 2297.00	1	0	559

8" Venturied valves are 6" ball check valves fitted with 6x8 end connector adapters.

Threaded Ends

2-1/2	4521-025 421.53	4531-025 448.95	1	0	605
3	4521-030 539.89	4531-030 605.59	1	0	605
4	4521-040 790.71	4531-040 833.07	1	0	605
6	4521-060 1554.91	4531-060 1723.26	1	0	558

SR Threaded Ends

1/2	4521-005SR 54.63	4531-005SR 61.41	1	18	604
3/4	4521-007SR 66.44	4531-007SR 69.98	1	18	604
1	4521-010SR 78.50	4531-010SR 87.23	1	18	604
1-1/4	4521-012SR 116.03	4531-012SR 129.57	1	12	604
1-1/2	4521-015SR 135.65	4531-015SR 149.63	1	8	604
2	4521-020SR 182.85	4531-020SR 202.32	1	8	604
2-1/2	4521-025SR 444.50	4531-025SR 471.94	1	0	605
3	4521-030SR 444.50	4531-030SR 471.94	1	0	605
4	4521-040SR 817.52	4531-040SR 859.90	1	0	605
6	4521-060SR 1599.30	4531-060SR 1769.16	1	0	558

NOT FOR USE WITH COMPRESSED AIR OR GAS

Spears® Manufacturing Company

True Union 2000 Industrial Ball Check Valves



PVC Industrial

Size	EPDM	Viton®	Std Pk	Mstr Pk	Disc Code
Spigot Ends					
1/2	4527-005 53.54	4537-005 60.34	1	18	604
3/4	4527-007 63.84	4537-007 67.38	1	18	604
1	4527-010 75.93	4537-010 84.64	1	12	604
1-1/4	4527-012 110.88	4537-012 124.45	1	12	604
1-1/2	4527-015 127.35	4537-015 141.34	1	8	604
2	4527-020 173.87	4537-020 193.33	1	8	604
2-1/2	4527-025 421.53	4537-025 448.95	1	0	605
3	4527-030 477.31	4537-030 602.66	1	0	605
4	4527-040 790.71	4537-040 833.07	1	0	605
6	4527-060 1554.91	4537-060 1723.26	1	0	558

Flanged Ends

1/2	4523-005 75.49	4533-005 94.74	6	0	604
3/4	4523-007 91.30	4533-007 113.62	5	0	604
1	4523-010 108.21	4533-010 132.21	5	0	604
1-1/4	4523-012 133.84	4533-012 173.01	2	0	604
1-1/2	4523-015 184.68	4533-015 200.72	3	0	604
2	4523-020 260.65	4533-020 266.83	2	0	604
2-1/2	4523-025 539.96	4533-025 628.80	1	0	605
3	4523-030 755.31	4533-030 878.30	1	0	605
4	4523-040 1022.38	4533-040 1186.70	1	0	605
6	4523-060 2448.69	4533-060 2840.47	1	0	558
8	4523-080 3180.11	4533-080 3696.56	1	0	559

8" Venturied valves are 6" ball check valves fitted with 6x8 end connector adapters.

CPVC Industrial

Size	EPDM	Viton®	Std Pk	Mstr Pk	Disc Code
Threaded & Socket Ends					
1/2	4529-005C 79.14	4539-005C 88.10	1	18	606
3/4	4529-007C 94.72	4539-007C 105.27	1	18	606
1	4529-010C 111.77	4539-010C 124.17	1	18	606
1-1/4	4529-012C 192.50	4539-012C 213.69	1	12	606

CPVC Industrial (continued)

Size	EPDM	Viton®	Std Pk	Mstr Pk	Disc Code
Threaded & Socket Ends					
1-1/2	4529-015C 192.50	4539-015C 213.69	1	8	606
2	4529-020C 257.12	4539-020C 286.48	1	8	606

Socket Ends

2-1/2	4522-025C 538.78	4532-025C 598.62	1	0	607
3	4522-030C 715.80	4532-030C 779.63	1	0	607
4	4522-040C 1182.31	4532-040C 1314.51	1	0	607
6	4522-060C 2441.02	4532-060C 2711.90	1	0	559
8	4522-080C 2871.80	4532-080C 3614.85	1	0	559

8" Venturied valves are 6" ball check valves fitted with 6x8 end connector adapters.

Threaded Ends

2-1/2	4521-025C 538.78	4531-025C 598.62	1	0	607
3	4521-030C 713.67	4531-030C 799.69	1	0	607
4	4521-040C 1182.31	4531-040C 1314.51	1	0	607
6	4521-060C 2441.02	4531-060C 2711.90	1	0	559

SR Threaded Ends

1/2	4521-005CSR 80.20	4531-005CSR 89.18	1	18	606
3/4	4521-007CSR 97.32	4531-007CSR 107.83	1	18	606
1	4521-010CSR 114.33	4531-010CSR 126.76	1	18	606
1-1/4	4521-012CSR 197.63	4531-012CSR 222.00	1	12	606
1-1/2	4521-015CSR 197.63	4531-015CSR 222.00	1	8	606
2	4521-020CSR 266.10	4531-020CSR 295.47	1	8	606
2-1/2	4521-025CSR 562.06	4531-025CSR 621.60	1	0	607
3	4521-030CSR 562.06	4531-030CSR 621.60	1	0	607
4	4521-040CSR 1209.12	4531-040CSR 1341.34	1	0	607
6	4521-060CSR 2506.84	4531-060CSR 2777.72	1	0	559

Spigot Ends

1/2	4527-005C 79.14	4537-005C 88.10	1	18	606
3/4	4527-007C 94.72	4537-007C 105.27	1	18	606
1	4527-010C 111.77	4537-010C 124.17	1	12	606
1-1/4	4527-012C 192.50	4537-012C 213.69	1	12	606
1-1/2	4527-015C 218.59	4537-015C 213.69	1	8	606

NOT FOR USE WITH COMPRESSED AIR OR GAS

Made in the U.S.A.

Progressive Products from Spears® Innovation and Technology

Page 2



True Union 2000 Industrial Ball Check Valves

CPVC Industrial (continued)

Size	EPDM	Viton®	Std Pk	Mstr Pk	Disc Code
------	------	--------	--------	---------	-----------

Spigot Ends

2	4527-020C 257.12	4537-020C 286.48	1	8	606
2-1/2	4527-025C 538.78	4537-025C 598.62	1	0	607
3	4527-030C 700.15	4537-030C 775.16	1	0	607
4	4527-040C 1182.31	4537-040C 1314.51	1	0	607
6	4527-060C 2441.02	4537-060C 2711.90	1	0	559

Flanged Ends

1/2	4523-005C 98.27	4533-005C 122.80	1	8	606
3/4	4523-007C 117.24	4533-007C 148.41	1	8	606
1	4523-010C 139.99	4533-010C 172.59	1	8	606
1-1/4	4523-012C 236.12	4533-012C 292.78	1	8	606
1-1/2	4523-015C 252.26	4533-015C 315.22	1	4	606
2	4523-020C 446.04	4533-020C 478.20	1	0	606
2-1/2	4523-025C 808.13	4533-025C 874.29	1	0	607
3	4523-030C 902.35	4533-030C 989.94	1	0	607
4	4523-040C 1492.90	4533-040C 1603.10	1	0	607
6	4523-060C 3980.64	4533-060C 4138.28	1	0	559
8	4523-080C 4582.09	4533-080C 4985.86	1	0	559

8" Venturied valves are 6" ball check valves fitted with 6x8 end connector adapters.

NOT FOR USE WITH COMPRESSED AIR OR GAS

Foot Valve Screens



Foot Valve Screens - Spigot

Size	PVC	CPVC	Std Pk	Mstr Pk	Disc Code
1/2	FVS-005 43.23	FVS-005C 59.71	10	60	299
3/4	FVS-007 51.34	FVS-007C 64.41	10	60	299
1	FVS-010 62.44	FVS-010C 73.12	10	40	299
1-1/4	FVS-012 90.89	FVS-012C 112.93	5	30	299
1-1/2	FVS-015 95.74	FVS-015C 117.26	5	0	299
2	FVS-020 108.05	FVS-020C 129.45	5	0	299
2-1/2	FVS-025 148.63	FVS-025C 188.60	5	0	299
3	FVS-030 152.88	FVS-030C 210.03	5	0	299
4	FVS-040 180.89	FVS-040C 300.18	5	0	299
6	FVS-060 244.96	FVS-060C 428.95	5	0	299
Fits all Socket Ball Check Valves					

**Convert to Foot Valve using
adapter - Fits all Socket Ball
Check Valves or any
IPS fitting socket**



PVC / CPVC Foot Valve Screen



True Union Ball Check Valves (Regular Style)



Socket/Threaded Style



Flanged Style

6" Venturied Valves are 4" Ball Check Valves equipped with 4x6 End Connectors.

General Installation Information: Ball check valves may be installed in either horizontal or vertical position. A minimum of ten (10) pipe diameters' distance maintained from any pump or other source of turbulence. Check valves **MUST** be installed with the valve's FLOW arrow pointing in the direction of flow.

PVC

Size	EPDM	Viton®	Std Pk	Mstr Pk	Disc Code
------	------	--------	--------	---------	-----------

Threaded & Socket Ends

1/2	2229-005 58.59	2239-005 66.02	1	18	220
3/4	2229-007 69.85	2239-007 73.74	1	12	220
1	2229-010 83.07	2239-010 92.61	1	8	220
1-1/4	2229-012 121.32	2239-012 136.15	1	8	220
1-1/2	2229-015 139.34	2239-015 154.64	1	8	220
2	2229-020 190.23	2239-020 211.53	1	4	220

Socket Ends

2-1/2	2222-025 461.19	2232-025 491.19	1	0	220
3	2222-030 557.14	2232-030 647.41	1	0	220
4	2222-040 865.12	2232-040 911.49	1	0	220

Socket Venturied Ends

6 VENTURIED	2222-060 1168.77	2232-060 1323.88	1	0	221
-------------	---------------------	---------------------	---	---	-----

Threaded Ends

2-1/2	2221-025 461.19	2231-025 491.19	1	0	220
3	2221-030 557.14	2231-030 647.41	1	0	220
4	2221-040 865.12	2231-040 911.49	1	0	220

Flanged Ends

1/2	2223-005 82.60	2233-005 103.68	6	0	220
3/4	2223-007 99.89	2233-007 124.31	5	0	220
1	2223-010 118.40	2233-010 144.66	5	0	220
1-1/4	2223-012 146.44	2233-012 189.30	2	0	220
1-1/2	2223-015 202.05	2233-015 219.63	3	0	220
2	2223-020 285.18	2233-020 291.95	2	0	220
2-1/2	2223-025 590.78	2233-025 687.99	1	0	220
3	2223-030 826.39	2233-030 960.96	1	0	220
4	2223-040 1118.61	2233-040 1298.39	1	0	220

Flanged Venturied Ends

6 VENTURIED	2223-060 1399.93	2233-060 1561.95	1	0	221
-------------	---------------------	---------------------	---	---	-----

NOT FOR USE WITH COMPRESSED AIR OR GAS

Spears® Manufacturing Company

True Union Ball Check Valves (Regular Style)



CPVC

Size	EPDM	Viton®	Std Pk	Mstr Pk	Disc Code
------	------	--------	--------	---------	-----------

Threaded & Socket Ends

1/2	2229-005C 86.59	2239-005C 96.40	1	18	222
3/4	2229-007C 103.65	2239-007C 115.18	1	12	222
1	2229-010C 122.30	2239-010C 135.87	1	8	222
1-1/4	2229-012C 210.61	2239-012C 233.81	1	8	222
1-1/2	2229-015C 254.68	2239-015C 269.20	1	8	222
2	2229-020C 282.03	2239-020C 313.45	1	4	222

Socket Ends

2-1/2	2222-025C 589.49	2232-025C 654.97	1	0	222
3	2222-030C 960.18	2232-030C 1050.76	1	0	222
4	2222-040C 1293.59	2232-040C 1438.23	1	0	222

Socket Venturied Ends

6 VENTURIED	2222-060C 1668.73	2232-060C 1869.67	1	0	223
-------------	----------------------	----------------------	---	---	-----

Threaded Ends

2-1/2	2221-025C 589.49	2231-025C 654.97	1	0	222
3	2221-030C 960.18	2231-030C 1050.76	1	0	222
4	2221-040C 1293.59	2231-040C 1438.23	1	0	222

Flanged Ends

1/2	2223-005C 107.52	2233-005C 134.35	6	0	222
3/4	2223-007C 128.27	2233-007C 162.39	5	0	222
1	2223-010C 153.16	2233-010C 188.82	5	0	222
1-1/4	2223-012C 258.35	2233-012C 320.33	2	0	222
1-1/2	2223-015C 276.00	2233-015C 344.88	3	0	222
2	2223-020C 488.01	2233-020C 523.21	2	0	222
2-1/2	2223-025C 776.52	2233-025C 884.18	1	0	222
3	2223-030C 987.29	2233-030C 1083.11	1	0	222
4	2223-040C 1633.40	2233-040C 1753.98	1	0	222

Flanged Venturied Ends

6 VENTURIED	2223-060C 1969.11	2233-060C 2131.44	1	0	223
-------------	----------------------	----------------------	---	---	-----

Pressure Rating @ 73°F (23°C), Water

1/2" - 2" 235 psi

2-1/2" - 6" 150 psi

Flanged 150 psi

Maximum Service Temperature

PVC = 140°F (60°C)

CPVC = 200°F (93°C)

Temperature/Pressure De-ratings Apply

Rated for Vacuum Service

All Valves assembled with Silicone-Free,
Water Soluble Lubricant

NOT FOR USE WITH COMPRESSED AIR OR GAS

Made in the U.S.A.

Progressive Products from Spears® Innovation and Technology

Page 6



Industrial Swing Check Valves



Threaded Bonnet on Sizes 3/4", 1" & 1-1/4"



Bolted Bonnet on Sizes 1-1/2" & Up
(Valve Shown with Arrow Indicator Option)

Pressure Rating @ 73°F (23°C), Water

3/4" - 4"	150 psi
6"	100 psi
8"	70 psi

Maximum Service Temperature

PVC = 140°F (60°C)
CPVC = 200°F (93°C)
PP = 180°F (82°C)

Temperature/Pressure De-ratings Apply

All Valves Assembled with Silicone-Free Lubricants

General Installation Information: Swing check valves are designed for horizontal installations, but may be installed in up-flow only vertical position. Check valves **MUST** be installed with the valve's FLOW arrow pointing in the direction of the flow. Do not install valve upside down. Flow velocity should not exceed 5 ft./sec.

Industrial Swing Check Valves

Size	EPDM	Viton®	Std Pk	Mstr Pk	Disc Code
PVC					
3/4	4423-007 465.38	4433-007 492.26	1	12	108
1	4423-010 536.30	4433-010 584.47	1	4	108
1-1/4	4423-012 670.85	4433-012 709.80	1	0	108
1-1/2	4423-015 735.43	4433-015 821.63	1	0	108
2	4423-020 846.67	4433-020 940.77	1	0	108
2-1/2	4423-025 1416.97	4433-025 1671.60	1	0	110
3	4423-030 1584.68	4433-030 2076.63	1	0	110
4	4423-040 2019.80	4433-040 2371.43	1	0	110
6	4423-060 3838.62	4433-060 4505.53	1	0	110
8	4423-080 7355.03	4433-080 8597.06	1	0	110

CPVC

3/4	4423-007C 735.31	4433-007C 817.12	1	12	109
1	4423-010C 847.90	4433-010C 942.81	1	4	109
1-1/4	4423-012C 1060.66	4433-012C 1177.96	1	0	109
1-1/2	4423-015C 1094.29	4433-015C 1487.23	1	0	109
2	4423-020C 1411.12	4433-020C 1567.90	1	0	109
2-1/2	4423-025C 2338.50	4433-025C 2775.04	1	0	111
3	4423-030C 2921.12	4433-030C 3143.09	1	0	111
4	4423-040C 3351.87	4433-040C 3952.95	1	0	111
6	4423-060C 6859.63	4433-060C 7512.69	1	0	111
8	4423-080C 12239.94	4433-080C 14313.41	1	0	111

PP

3/4	4423-007P 535.13	4433-007P 594.57	1	12	113
1	4423-010P 640.18	4433-010P 697.72	1	4	113
1-1/4	4423-012P 767.27	4433-012P 852.44	1	0	113
1-1/2	4423-015P 952.63	4433-015P 1036.60	1	0	113
2	4423-020P 1018.54	4433-020P 1144.43	1	0	113
2-1/2	4423-025P 1695.87	4433-025P 1886.40	1	0	112
3	4423-030P 1782.89	4433-030P 2131.95	1	0	112
4	4423-040P 2425.12	4433-040P 2691.87	1	0	112

NOT FOR USE WITH COMPRESSED AIR OR GAS

Spears® Manufacturing Company

Progressive Products from Spears® Innovation and Technology

Industrial Swing Check Valves



Industrial Swing Check Valves (continued)

Size	EPDM	Viton®	Std Pk	Mstr Pk	Disc Code
PP					
6	4423-060P 4593.89	4433-060P 5108.35	1	0	112
8	4423-080P 8793.37	4433-080P 9663.09	1	0	112

Swing Check Valve With Arrow Indicator

Size	EPDM	Viton®	Std Pk	Mstr Pk	Disc Code
PVC					
3/4	4423I-007 473.02	4433I-007 499.93	1	12	108
1	4423I-010 543.94	4433I-010 608.97	1	4	108
1-1/4	4423I-012 694.66	4433I-012 763.36	1	0	108
1-1/2	4423I-015 805.62	4433I-015 763.36	1	0	108
2	4423I-020 872.28	4433I-020 952.15	1	0	108
2-1/2	4423I-025 1425.05	4433I-025 1585.33	1	0	110
3	4423I-030 1659.60	4433I-030 1585.33	1	0	110
4	4423I-040 2028.00	4433I-040 2410.12	1	0	110
6	4423I-060 3846.64	4433I-060 4542.63	1	0	110
8	4423I-080 7471.94	4433I-080 8640.99	1	0	110

CPVC

3/4	4423I-007C 743.43	4433I-007C 824.74	1	12	109
1	4423I-010C 855.56	4433I-010C 951.99	1	4	109
1-1/4	4423I-012C 1055.53	4433I-012C 1188.68	1	0	109
1-1/2	4423I-015C 1214.04	4433I-015C 1188.68	1	0	109
2	4423I-020C 1422.15	4433I-020C 1608.88	1	0	109
2-1/2	4423I-025C 2346.45	4433I-025C 2814.29	1	0	111
3	4423I-030C 2518.23	4433I-030C 2814.29	1	0	111
4	4423I-040C 3374.18	4433I-040C 3976.31	1	0	111
6	4423I-060C 6961.49	4433I-060C 7520.82	1	0	111
8	4423I-080C 12253.09	4433I-080C 14358.67	1	0	111

PP

3/4	4423I-007P 542.77	4433I-007P 602.22	1	12	113
1	4423I-010P 650.88	4433I-010P 751.28	1	4	113
1-1/4	4423I-012P 836.13	4433I-012P 928.14	1	0	113

Swing Check Valve With Arrow Indicator (continued)

Size	EPDM	Viton®	Std Pk	Mstr Pk	Disc Code
PP					
1-1/2	4423I-015P 1074.85	4433I-015P 928.14	1	0	113
2	4423I-020P 1046.65	4433I-020P 1186.88	1	0	113
2-1/2	4423I-025P 1705.73	4433I-025P 1911.57	1	0	112
3	4423I-030P 2125.84	4433I-030P 2218.84	1	0	112
4	4423I-040P 2434.99	4433I-040P 2701.78	1	0	112
6	4423I-060P 4693.04	4433I-060P 5151.40	1	0	112
8	4423I-080P 8858.86	4433I-080P 9760.76	1	0	112

Swing Check Valve With Counter Balance

Size	EPDM	Viton®	Std Pk	Mstr Pk	Disc Code
PVC					
3/4	4423CB-007 736.12	4433CB-007 787.82	1	8	108
1	4423CB-010 823.45	4433CB-010 882.04	1	4	108
1-1/4	4423CB-012 994.64	4433CB-012 1033.95	1	0	108
1-1/2	4423CB-015 1067.16	4433CB-015 1246.38	1	0	108
2	4423CB-020 1177.41	4433CB-020 1425.16	1	0	108
2-1/2	4423CB-025 1771.73	4433CB-025 2025.76	1	0	110
3	4423CB-030 1995.27	4433CB-030 2302.13	1	0	110
4	4423CB-040 2390.77	4433CB-040 2742.37	1	0	110
6	4423CB-060 4262.72	4433CB-060 4262.72	1	0	110
8	4423CB-080 8546.49	4433CB-080 9013.04	1	0	110

CPVC

3/4	4423CB-007C 1141.26	4433CB-007C 1244.12	1	12	109
1	4423CB-010C 1238.30	4433CB-010C 1345.86	1	4	109
1-1/4	4423CB-012C 1055.53	4433CB-012C 1449.86	1	0	109
1-1/2	4423CB-015C 1449.86	4433CB-015C 1676.63	1	0	109
2	4423CB-020C 1884.47	4433CB-020C 2041.28	1	0	109
2-1/2	4423CB-025C 2844.47	4433CB-025C 3281.09	1	0	111
3	4423CB-030C 3079.35	4433CB-030C 4079.57	1	0	111
4	4423CB-040C 3810.22	4433CB-040C 4482.88	1	0	111
6	4423CB-060C 7465.49	4433CB-060C 8118.51	1	0	111

NOT FOR USE WITH COMPRESSED AIR OR GAS

Made in the U.S.A.

Progressive Products from Spears® Innovation and Technology

Page 8



Industrial Swing Check Valves

Swing Check Valve With Counter Balance

(continued)

Size	EPDM	Viton®	Std Pk	Mstr Pk	Disc Code
------	------	--------	--------	---------	-----------

CPVC

8	4423CB-080C 12856.35	4433CB-080C 14929.69	1	0	111
---	-------------------------	-------------------------	---	---	-----

PP

3/4	4423CB-007P 684.96	4433CB-007P 761.05	1	12	113
1	4423CB-010P 819.40	4433CB-010P 893.06	1	4	113
1-1/4	4423CB-012P 836.13	4433CB-012P 1286.64	1	0	113
1-1/2	4423CB-015P 1181.87	4433CB-015P 1586.97	1	0	113
2	4423CB-020P 1273.18	4433CB-020P 1430.53	1	0	113
2-1/2	4423CB-025P 1965.59	4433CB-025P 2414.59	1	0	112
3	4423CB-030P 2391.55	4433CB-030P 2992.20	1	0	112
4	4423CB-040P 2738.68	4433CB-040P 3008.65	1	0	112
6	4423CB-060P 5095.38	4433CB-060P 6538.68	1	0	112
8	4423CB-080P 9302.09	4433CB-080P 10171.82	1	0	112

Contact Spears® for Pricing on Additional Specialty Valve Accessories Available:

- Arrow Indicator Kits for Field Installation
- Counter Balance Kits for Field Installation

NOT FOR USE WITH COMPRESSED AIR OR GAS

Industrial Swing Check Valve Accessory and Repair Kits



Industrial Swing Check Valve Repair Kits

Repair Kits include:

- 1-Bonnet O-ring
- 1-Disc O-ring
- 1-Seat O-ring
- 1-Plug O-ring
- 1-Arm Plug O-ring

Size	EPDM	Viton®	Std Pk	Mstr Pk	Disc Code
3/4	SK-ERK-007 24.98	SK-VRK-007 30.45	1	10	299
1	SK-ERK-010 32.62	SK-VRK-010 39.79	1	10	299
1-1/2 & 1-1/4	SK-ERK-015 78.00	SK-VRK-015 98.65	1	10	299
2	SK-ERK-020 83.74	SK-VRK-020 102.11	1	10	299
2-1/2	SK-ERK-025 88.56	SK-VRK-025 113.34	1	10	299
3	SK-ERK-030 100.41	SK-VRK-030 122.52	1	10	299
4	SK-ERK-040 109.55	SK-VRK-040 133.59	1	10	299
6	SK-ERK-060 217.74	SK-VRK-060 257.04	1	10	299
8	SK-ERK-080 273.97	SK-VRK-080 332.38	1	10	299



Utility Swing Check Valves

PVC White

Size	Socket	Thread	SR Threaded	Std Pk	Mstr Pk	Disc Code
1/2	S1520-05 15.85	S1520-05F 15.85	S1520-05FSR 18.49	35	0	026
3/4	S1520-07 16.36	S1520-07F 16.36	S1520-07FSR 20.12	35	0	026
1	S1520-10 17.04	S1520-10F 17.04	S1520-10FSR 22.28	20	0	026
1-1/4	S1520-12 17.70	S1520-12F 17.70	S1520-12FSR 26.11	12	0	026
1-1/2	S1520-15 18.76	S1520-15F 18.76	S1520-15FSR 33.12	12	0	026
2	S1520-20 29.12	S1520-20F 29.12	S1520-20FSR 44.70	15	0	026
2-1/2	S1520-25 48.44	S1520-25F 48.44	S1520-25FSR 64.02	5	0	026
3	S1520-30 53.83	S1520-30F 53.83	S1520-30FSR 95.47	4	0	026
4	S1520-40 76.21	S1520-40F 76.21	S1520-40FSR 119.36	2	0	026
6	S1520-60 160.13	S1520-60F 160.13	S1520-60FSR 211.21	1	0	026
8	S1520-80 297.47	---	---	1	0	026



PVC Clear

Size	Socket	Thread	SR Threaded	Std Pk	Mstr Pk	Disc Code
1/2	S1520C05 21.55	S1520C05F 21.55	S1520C05FSR 24.18	35	0	026
3/4	S1520C07 21.97	S1520C07F 21.97	S1520C07FSR 25.76	35	0	026
1	S1520C10 22.39	S1520C10F 22.39	S1520C10FSR 27.64	20	0	026
1-1/4	S1520C12 23.51	S1520C12F 23.51	S1520C12FSR 31.89	12	0	026
1-1/2	S1520C15 25.55	S1520C15F 25.55	S1520C15FSR 39.93	12	0	026
2	S1520C20 36.78	S1520C20F 36.78	S1520C20FSR 52.36	15	0	026
2-1/2	S1520C25 61.31	S1520C25F 61.31	S1520C25FSR 85.47	5	0	026
3	S1520C30 68.13	S1520C30F 68.13	S1520C30FSR 109.76	4	0	026
4	S1520C40 91.71	S1520C40F 91.71	S1520C40FSR 134.83	2	0	026
6	S1520C60 189.55	S1520C60F 189.55	S1520C60FSR 240.64	1	0	026
8	S1520C80 316.63	---	---	1	0	026

Pressure Rating @ 73°F (23°C), Water
 Full Flow (open) 150 psi
 Back Pressure (closed) 75 psi

Maximum Service Temperature
 140°F (60°C)

Temperature/Pressure De-ratings Apply

EPDM Seat

General Installation Information: Swing check valves are designed for horizontal installations, but may be installed in up-flow only vertical position. Check valves MUST be installed with the valve's FLOW arrow pointing in the direction of the flow. Do not install valve upside down. Flow velocity should not exceed 5 ft./sec. Minimum opening pressure less than 0.5 psi.

Compression Utility Swing Check Valves



- Standard Swing Check Assembly Maintains a Positive Seal
- Convenient Compression Ends for Quick Connections
- Engineered for Maximum Flow, Quick Response & Positive Shutoff
- Excellent for Pool & Spa, OEM and General Purpose Applications
- Compact, Space-Saving Design
- Replaceable PVC White or Clear Sealed Unit
- High Grade EPDM Seat
- Suitable for Horizontal or Vertical Up-flow Installations
- Pressure Rated to 150 psi @ 73°F Full Flow (open), 75 psi Back Pressure (closed)
- Maximum Service Temperature 140°F (temperature/pressure de-ratings apply)

General Installation Information: Swing check valves are designed for horizontal installations, but may be installed in up-flow only vertical position. Check valves **MUST** be installed with the valve's FLOW arrow pointing in the direction of the flow. Do not install valve upside down. Flow velocity should not exceed 5 ft./sec. Minimum opening pressure less than 0.5 psi.

Pressure Rating @ 73°F (23°C), Water
Full Flow (open) 150 psi
Back Pressure (closed) 75 psi

Maximum Service Temperature
140°F (60°C)

Temperature/Pressure De-ratings Apply

PVC White

Part Number	Size	Std Pk	Mstr Ctn	Disc Code	Price Each
-------------	------	--------	----------	-----------	------------

Gasketed

S1500-05	1/2	20	0	026	21.06
S1500-07	3/4	35	0	026	22.16
S1500-10	1	20	0	026	23.09
S1500-12	1-1/4	12	0	026	27.12
S1500-15	1-1/2	12	0	026	30.26
S1500-20	2	10	0	026	47.73
S1500-25	2-1/2	5	0	026	79.71
S1500-30	3	4	0	026	103.48
S1500-40	4	2	0	026	158.97

PVC Clear

Part Number	Size	Std Pk	Mstr Ctn	Disc Code	Price Each
-------------	------	--------	----------	-----------	------------

Gasketed

S1500C05	1/2	35	0	026	23.16
S1500C07	3/4	20	0	026	24.93
S1500C10	1	20	0	026	25.44
S1500C12	1-1/4	12	0	026	28.56
S1500C15	1-1/2	12	0	026	32.19
S1500C20	2	10	0	026	48.05
S1500C25	2-1/2	5	0	026	80.60
S1500C30	3	4	0	026	117.72
S1500C40	4	2	0	026	162.20

Compression Coupling Nut Wrenches

Part Number	Size	Std Pk	Mstr Ctn	Disc Code	Price Each
CCW-005	1/2	1	50	299	11.33
CCW-007	3/4	1	50	299	11.53
CCW-010	1	1	50	299	12.02
CCW-012	1-1/4	1	50	299	13.60
CCW-015	1-1/2	1	50	299	14.67
CCW-020*	2	1	50	299	16.39
CCW-030**	3	1	25	299	20.16

* CCW-20 - Wrench also fits 2-1/2" Coupling Body

**CCW-30 - Wrench also fits 4" Coupling Body

Compression Coupling Nut Wrench Sets

Part Number	Size	Std Pk	Mstr Ctn	Disc Code	Price Each
CCW-000	Set	1	50	299	94.70

Complete Set of Wrenches, Sizes 1/2" - 3"

NOT FOR USE WITH COMPRESSED AIR OR GAS

Utility Spring Check Valves



(Spring Assisted Swing Check)



Pressure Rating @ 73°F (23°C), Water
 Full Flow (open) 150 psi
 Back Pressure (closed) 75 psi

Maximum Service Temperature
 140°F (60°C)

Temperature/Pressure De-ratings Apply

EPDM Seat

Stainless Steel Spring Assisted
 (non-adjustable)

General Installation Information: Spring check valves are designed for horizontal installations, but may be installed in up-flow only vertical position. Check valves **MUST** be installed with the valve's FLOW arrow pointing in the direction of the flow. Do not install valve upside down. Flow velocity should not exceed 5 ft./sec. Minimum opening pressure = 0.5 psi.

PVC White

Size	Socket	Thread	SR Thread	Std Pk	Mstr Pk	Disc Code
1/2	S1580-05 31.20	S1580-05F 31.20	S1580-05FSR 33.84	20	0	026
3/4	S1580-07 35.31	S1580-07F 35.31	S1580-07FSR 39.07	20	0	026
1	S1580-10 36.78	S1580-10F 36.78	S1580-10FSR 42.01	20	0	026
1-1/4	S1580-12 38.30	S1580-12F 38.30	S1580-12FSR 46.71	12	0	026
1-1/2	S1580-15 40.77	S1580-15F 40.77	S1580-15FSR 55.12	12	0	026
2	S1580-20 42.74	S1580-20F 42.74	S1580-20FSR 58.32	15	0	026
2-1/2	S1580-25 75.86	S1580-25F 75.86	S1580-25FSR 100.02	4	0	026
3	S1580-30 79.12	S1580-30F 79.12	S1580-30FSR 120.76	4	0	026
4	S1580-40 112.28	S1580-40F 112.28	S1580-40FSR 155.43	2	0	026

PVC Clear

Size	Socket	Thread	SR Thread	Std Pk	Mstr Pk	Disc Code
1/2	S1580C05 32.15	S1580C05F 32.15	S1580C05FSR 34.82	20	0	026
3/4	S1580C07 36.39	S1580C07F 36.39	S1580C07FSR 40.19	20	0	026
1	S1580C10 37.94	S1580C10F 37.94	S1580C10FSR 43.16	20	0	026
1-1/4	S1580C12 39.50	S1580C12F 39.50	S1580C12FSR 47.89	12	0	026
1-1/2	S1580C15 41.85	S1580C15F 41.85	S1580C15FSR 56.23	12	0	026
2	S1580C20 43.43	S1580C20F 43.43	S1580C20FSR 59.00	15	0	026
2-1/2	S1580C25 78.21	S1580C25F 78.21	S1580C25FSR 102.33	4	0	026
3	S1580C30 81.44	S1580C30F 81.44	S1580C30FSR 162.04	4	0	026
4	S1580C40 115.71	S1580C40F 115.71	S1580C40FSR 158.85	2	0	026

NOT FOR USE WITH COMPRESSED AIR OR GAS



True Union Utility Spring Check Valves

(Spring Assisted Swing Check)

PVC White

Size	Socket	Thread	SR Thread	Std Pk	Mstr Pk	Disc Code
1/2	S1780-05 41.49	S1780-05F 41.49	S1780-05FSR 44.12	20	0	026
3/4	S1780-07 47.06	S1780-07F 47.06	S1780-07FSR 50.84	30	0	026
1	S1780-10 49.05	S1780-10F 49.05	S1780-10FSR 54.26	18	0	026
1-1/4	S1780-12 51.09	S1780-12F 51.09	S1780-12FSR 59.44	12	0	026
1-1/2	S1780-15 54.43	S1780-15F 54.43	S1780-15FSR 68.82	10	0	026
2	S1780-20 56.67	S1780-20F 56.67	S1780-20FSR 72.23	10	0	026
2-1/2	S1780-25 101.14	S1780-25F 101.14	S1780-25FSR 125.24	2	0	026
3	S1780-30 105.51	S1780-30F 105.51	S1780-30FSR 147.15	2	0	026
4	S1780-40 149.71	S1780-40F 149.71	S1780-40FSR 192.89	1	0	026



PVC Clear

Size	Socket	Thread	SR Thread	Std Pk	Mstr Pk	Disc Code
1/2	S1780C05 42.80	S1780C05F 42.80	S1780C05FSR 45.43	20	0	026
3/4	S1780C07 48.54	S1780C07F 48.54	S1780C07FSR 52.32	30	0	026
1	S1780C10 50.56	S1780C10F 50.56	S1780C10FSR 55.82	18	0	026
1-1/4	S1780C12 52.64	S1780C12F 52.64	S1780C12FSR 61.00	12	0	026
1-1/2	S1780C15 55.82	S1780C15F 55.82	S1780C15FSR 70.50	10	0	026
2	S1780C20 57.45	S1780C20F 57.45	S1780C20FSR 73.94	10	0	026
2-1/2	S1780C25 104.27	S1780C25F 104.27	S1780C25FSR 128.43	2	0	026
3	S1780C30 108.76	S1780C30F 108.76	S1780C30FSR 150.39	2	0	026
4	S1780C40 154.36	S1780C40F 154.36	S1780C40FSR 197.53	1	0	026

Pressure Rating @ 73°F (23°C), Water
 Full Flow (open) 150 psi
 Back Pressure (closed) 75 psi

Maximum Service Temperature
 140°F (60°C)

Temperature/Pressure De-ratings Apply

EPDM Seat

Stainless Steel Spring Assisted
 (non-adjustable)

General Installation Information: Spring check valves are designed for horizontal installations, but may be installed in up-flow only vertical position. Check valves **MUST** be installed with the valve's FLOW arrow pointing in the direction of the flow. Do not install valve upside down. Flow velocity should not exceed 5 ft./sec. Minimum opening pressure = 0.5 psi.

NOT FOR USE WITH COMPRESSED AIR OR GAS

Spears® Manufacturing Company

PVC In-line Adjustable Spring Check Valves



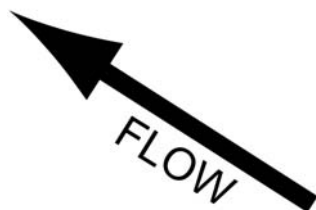
Fipt x Mipt



Mipt x Fipt



Fipt x Fipt



Standard Unit - Female Inlet x Male Outlet

Part Number	Size	Std Pk	Mstr Ctn	Disc Code	Price Each
Fipt x Mipt (Inlet x Outlet)					
S1102-05	1/2	30	180	026	10.40
S1102-07	3/4	25	150	026	10.64
S1102-10	1	25	150	026	17.66
S1102-05-07	1/2X3/4	25	150	026	15.18

Male Inlet x Female Outlet Option

Part Number	Size	Std Pk	Mstr Ctn	Disc Code	Price Each
Mipt x Fipt (Inlet x Outlet)					
S1101-05	1/2	30	180	026	10.40

Female Inlet x Female Outlet Option

Part Number	Size	Std Pk	Mstr Ctn	Disc Code	Price Each
Fipt x Fipt (Inlet x Outlet)					
S1100-07	3/4	25	150	026	10.99

Pressure Rating @ 73°F (23°C), Water

200 psi

Maximum Service Temperature

PVC = 140°F (60°C)

Temperature/Pressure De-ratings Apply

2 - 14 lbs. Adjustable Spring Tension
(5 to 32 feet of head)

Factory Preset to Approx. 5 psi
(12 feet of head)

Each full turn of adjustment nut = 1 psi
(2.3 feet of head)

Stainless Steel Adjustment Hardware

EPDM Seat



Diaphragm Check Valves



PVC Diaphragm Check Valves - Socket

Part Number	Size	Std Pk	Mstr Ctn	Disc Code	Price Each
6562-007	3/4	15	0	004	84.64

PVC Diaphragm Check Valves - Thread

Part Number	Size	Std Pk	Mstr Ctn	Disc Code	Price Each
6561-007	3/4	15	0	004	84.64

CPVC Diaphragm Check Valves - Socket

Part Number	Size	Std Pk	Mstr Ctn	Disc Code	Price Each
6562-007C	3/4	15	0	004	111.15

CPVC Diaphragm Check Valves - Thread

Part Number	Size	Std Pk	Mstr Ctn	Disc Code	Price Each
6561-007C	3/4	15	0	004	111.15

General Installation Information: Diaphragm Check Valves have "normally closed" operation with 1 - 1-1/2 psi opening pressure and can be mounted in any position. Check valves **MUST** be installed with the valve's FLOW arrow pointing in the direction of the flow. Flow velocity should not exceed 5 ft./sec.

Pressure Rating @ 73°F (23°C), Water

Full Flow (open) 150 psi
 Back Pressure (closed) 100 psi

Maximum Service Temperature

PVC = 140°F (60°C)
 CPVC = 200°F (93°C)

Temperature/Pressure De-ratings Apply

Santoprene™ TPE Seat

NOT FOR USE WITH COMPRESSED AIR OR GAS

Spears® Manufacturing Company

Progressive Products from Spears® Innovation and Technology

Y-Check Valves



PVC - Socket Ends

Size	EPDM	Viton®	Std Pk	Mstr Pk	Disc Code
1/2	1622-005 84.18	1632-005 93.36	1	18	627
3/4	1622-007 90.30	1632-007 101.02	1	18	627
1	1622-010 99.48	1632-010 110.18	1	12	627
1-1/4	1622-012 156.10	1632-012 172.95	1	8	627
1-1/2	1622-015 169.87	1632-015 188.24	1	8	627
2	1622-020 211.20	1632-020 234.17	1	4	627
3	1622-030 417.81	1632-030 463.71	1	0	627
4	1622-040 728.49	1632-040 809.61	1	0	627



PVC Clear — Socket Style

PVC - SR Threaded Ends

Size	EPDM	Viton®	Std Pk	Mstr Pk	Disc Code
1/2	1621-005SR 87.24	1631-005SR 96.43	1	18	627
3/4	1621-007SR 94.88	1631-007SR 105.60	1	12	627
1	1621-010SR 105.60	1631-010SR 116.31	1	8	627
1-1/4	1621-012SR 165.28	1631-012SR 182.12	1	8	627
1-1/2	1621-015SR 183.65	1631-015SR 202.02	1	4	627
2	1621-020SR 226.50	1631-020SR 249.46	1	0	627
3	1621-030SR 459.14	1631-030SR 505.04	1	0	627
4	1621-040SR 771.34	1631-040SR 852.44	1	0	627



True Union Style

PVC - Flanged Ends

Size	EPDM	Viton®	Std Pk	Mstr Pk	Disc Code
1/2	1623-005 110.18	1633-005 122.45	1	8	627
3/4	1623-007 120.90	1633-007 134.68	1	4	627
1	1623-010 141.53	1633-010 162.22	1	8	627
1-1/4	1623-012 224.97	1633-012 249.46	1	4	627
1-1/2	1623-015 238.76	1633-015 264.76	1	4	627
2	1623-020 319.86	1633-020 355.04	1	0	627
3	1623-030 625.94	1633-030 694.81	1	0	627
4	1623-040 999.36	1633-040 1109.56	1	0	627

Pressure Rating @ 73°F (23°C), Water

1/2" - 2" 150 psi

3" - 4" 90 psi

Maximum Service Temperature

PVC = 140°F (60°C)

CPVC = 200°F (93°C)

Temperature/Pressure De-ratings Apply

NOT FOR USE WITH COMPRESSED AIR OR GAS

Made in the U.S.A.

Progressive Products from Spears® Innovation and Technology

Page 18



Y-Check Valves

PVC Clear - Socket Ends

Size	EPDM	Viton®	Std Pk	Mstr Pk	Disc Code
1/2	1622-005CL 84.18	1632-005CL 93.36	1	18	628
3/4	1622-007CL 90.30	1632-007CL 101.02	1	18	628
1	1622-010CL 99.48	1632-010CL 110.18	1	12	628
1-1/4	1622-012CL 156.10	1632-012CL 172.95	1	8	628
1-1/2	1622-015CL 169.87	1632-015CL 188.24	1	8	628
2	1622-020CL 211.20	1632-020CL 234.17	1	4	628
3	1622-030CL 417.81	1632-030CL 463.71	1	0	628
4	1622-040CL 728.49	1632-040CL 809.61	1	0	628

CPVC - Socket Ends

Size	EPDM	Viton®	Std Pk	Mstr Pk	Disc Code
1/2	1622-005C 120.90	1632-005C 133.14	1	18	629
3/4	1622-007C 130.09	1632-007C 143.86	1	18	629
1	1622-010C 142.33	1632-010C 157.63	1	12	629
1-1/4	1622-012C 223.44	1632-012C 247.93	1	8	629
1-1/2	1622-015C 243.34	1632-015C 269.35	1	8	629
2	1622-020C 301.49	1632-020C 335.15	1	4	629
3	1622-030C 862.84	1632-030C 965.46	1	0	629
4	1622-040C 1040.67	1632-040C 1156.99	1	0	629

PVC Clear - SR Threaded Ends

Size	EPDM	Viton®	Std Pk	Mstr Pk	Disc Code
1/2	1621-005CLSR 87.24	1631-005CLSR 96.43	1	18	628
3/4	1621-007CLSR 94.88	1631-007CLSR 105.60	1	12	628
1	1621-010CLSR 105.60	1631-010CLSR 116.31	1	8	628
1-1/4	1621-012CLSR 165.28	1631-012CLSR 182.12	1	8	628
1-1/2	1621-015CLSR 183.65	1631-015CLSR 202.02	1	4	628
2	1621-020CLSR 226.50	1631-020CLSR 249.46	1	0	628
3	1621-030CLSR 459.14	1631-030CLSR 505.04	1	0	628
4	1621-040CLSR 771.34	1631-040CLSR 852.44	1	0	628

CPVC - SR Threaded Ends

Size	EPDM	Viton®	Std Pk	Mstr Pk	Disc Code
1/2	1621-005CSR 123.96	1631-005CSR 137.73	1	18	629
3/4	1621-007CSR 134.68	1631-007CSR 149.99	1	12	629
1	1621-010CSR 149.99	1631-010CSR 165.28	1	8	629
1-1/4	1621-012CSR 235.69	1631-012CSR 258.64	1	8	629
1-1/2	1621-015CSR 263.23	1631-015CSR 289.26	1	4	629
2	1621-020CSR 322.91	1631-020CSR 356.60	1	0	629
3	1621-030CSR 656.55	1631-030CSR 722.36	1	0	629
4	1621-040CSR 1100.37	1631-040CSR 1216.69	1	0	629

PVC Clear - Flanged Ends

Size	EPDM	Viton®	Std Pk	Mstr Pk	Disc Code
1/2	1623-005CL 110.18	1633-005CL 122.45	1	8	628
3/4	1623-007CL 120.90	1633-007CL 134.68	1	8	628
1	1623-010CL 145.39	1633-010CL 162.22	1	8	628
1-1/4	1623-012CL 224.97	1633-012CL 249.46	1	4	628
1-1/2	1623-015CL 238.76	1633-015CL 264.76	1	4	628
2	1623-020CL 319.86	1633-020CL 355.04	1	0	628
3	1623-030CL 625.94	1633-030CL 694.81	1	0	628
4	1623-040CL 999.36	1633-040CL 1109.56	1	0	628

CPVC - Flanged Ends

Size	EPDM	Viton®	Std Pk	Mstr Pk	Disc Code
1/2	1623-005C 157.63	1633-005C 162.26	1	8	629
3/4	1623-007C 172.95	1633-007C 192.83	1	8	629
1	1623-010C 208.15	1633-010C 231.71	1	8	629
1-1/4	1623-012C 321.39	1633-012C 356.60	1	4	629
1-1/2	1623-015C 339.74	1633-015C 378.01	1	4	629
2	1623-020C 456.06	1633-020C 506.56	1	0	629
3	1623-030C 893.77	1633-030C 993.24	1	0	629
4	1623-040C 1426.35	1633-040C 1585.52	1	0	629

NOT FOR USE WITH COMPRESSED AIR OR GAS

Y-Check Valves



PVC - True Union Socket Ends

Size	EPDM	Viton®	Std Pk	Mstr Pk	Disc Code
1/2	162A-005 91.83	163A-005 101.02	1	12	627
3/4	162A-007 97.94	163A-007 110.18	1	8	627
1	162A-010 108.66	163A-010 119.36	1	8	627
1-1/4	162A-012 169.87	163A-012 188.24	1	4	627
1-1/2	162A-015 185.18	163A-015 205.09	1	0	627
2	162A-020 229.56	163A-020 254.04	2	0	627
3	162A-030 454.53	163A-030 495.86	1	0	627
4	162A-040 792.77	163A-040 880.00	1	0	627

PVC Clear - True Union Socket Ends

Size	EPDM	Viton®	Std Pk	Mstr Pk	Disc Code
1/2	162A-005CL 91.83	163A-005CL 101.02	1	12	628
3/4	162A-007CL 97.94	163A-007CL 110.18	1	8	628
1	162A-010CL 108.66	163A-010CL 119.36	1	8	628
1-1/4	162A-012CL 169.87	163A-012CL 188.24	1	4	628
1-1/2	162A-015CL 185.18	163A-015CL 205.09	1	0	628
2	162A-020CL 229.56	163A-020CL 254.04	2	0	628
3	162A-030CL 454.53	163A-030CL 495.86	1	0	628
4	162A-040CL 792.77	163A-040CL 880.00	1	0	628

PVC - True Union Threaded Ends

Size	EPDM	Viton®	Std Pk	Mstr Pk	Disc Code
1/2	162B-005 91.83	163B-005 101.02	1	12	627
3/4	162B-007 97.94	163B-007 110.18	1	8	627
1	162B-010 108.66	163B-010 119.36	1	8	627
1-1/4	162B-012 168.36	163B-012 188.24	1	4	627
1-1/2	162B-015 185.18	163B-015 205.09	1	0	627
2	162B-020 229.56	163B-020 254.04	2	0	627
3	162B-030 454.53	163B-030 495.86	1	0	627
4	162B-040 792.77	163B-040 880.00	1	0	627

PVC Clear - True Union Threaded Ends

Size	EPDM	Viton®	Std Pk	Mstr Pk	Disc Code
1/2	162B-005CL 91.83	163B-005CL 101.02	1	12	628
3/4	162B-007CL 97.94	163B-007CL 110.18	1	8	628
1	162B-010CL 108.66	163B-010CL 119.36	1	8	628
1-1/4	162B-012CL 169.87	163B-012CL 188.24	1	4	628
1-1/2	162B-015CL 185.18	163B-015CL 205.09	1	0	628
2	162B-020CL 229.56	163B-020CL 254.04	2	0	628
3	162B-030CL 454.53	163B-030CL 495.86	1	0	628
4	162B-040CL 792.77	163B-040CL 880.00	1	0	628

PVC - True Union SR Threaded Ends

Size	EPDM	Viton®	Std Pk	Mstr Pk	Disc Code
1/2	162B-005SR 94.88	163B-005SR 104.07	1	12	627
3/4	162B-007SR 102.53	163B-007SR 113.26	1	8	627
1	162B-010SR 113.26	163B-010SR 125.50	1	8	627
1-1/4	162B-012SR 179.06	163B-012SR 197.41	1	4	627
1-1/2	162B-015SR 200.48	163B-015SR 220.38	1	0	627
2	162B-020SR 246.40	163B-020SR 272.40	1	0	627
3	162B-030SR 498.91	163B-030SR 549.43	1	0	627
4	162B-040SR 837.14	163B-040SR 925.90	1	0	627

PVC Clear - True Union SR Threaded Ends

Size	EPDM	Viton®	Std Pk	Mstr Pk	Disc Code
1/2	162B-005CLSR 94.88	163B-005CLSR 104.07	1	12	628
3/4	162B-007CLSR 102.53	163B-007CLSR 113.26	1	8	628
1	162B-010CLSR 113.26	163B-010CLSR 125.50	1	8	628
1-1/4	162B-012CLSR 179.06	163B-012CLSR 197.41	1	4	628
1-1/2	162B-015CLSR 200.48	163B-015CLSR 220.38	1	0	628
2	162B-020CLSR 246.40	163B-020CLSR 272.40	1	0	628
3	162B-030CLSR 498.91	163B-030CLSR 549.43	1	0	628
4	162B-040CLSR 837.14	163B-040CLSR 925.90	1	0	628



Y-Check Valves

CPVC - True Union Socket Ends

Size	EPDM	Viton®	Std Pk	Mstr Pk	Disc Code
1/2	162A-005C 131.62	163A-005C 145.39	1	12	629
3/4	162A-007C 140.80	163A-007C 157.63	1	8	629
1	162A-010C 154.57	163A-010C 171.41	1	8	629
1-1/4	162A-012C 241.81	163A-012C 269.35	1	4	629
1-1/2	162A-015C 263.23	163A-015C 292.32	1	0	629
2	162A-020C 327.51	163A-020C 364.23	2	0	629
3	162A-030C 648.90	163A-030C 708.57	1	0	629
4	162A-040C 1130.98	163A-040C 1256.48	1	0	629

CPVC - True Union Threaded Ends

Size	EPDM	Viton®	Std Pk	Mstr Pk	Disc Code
1/2	162B-005C 131.62	163B-005C 145.39	1	12	629
3/4	162B-007C 140.80	163B-007C 157.63	1	8	629
1	162B-010C 154.57	163B-010C 171.41	1	8	629
1-1/4	162B-012C 241.81	163B-012C 269.35	1	4	629
1-1/2	162B-015C 263.23	163B-015C 292.32	1	0	629
2	162B-020C 327.51	163B-020C 364.23	2	0	629
3	162B-030C 648.90	163B-030C 708.57	1	0	629
4	162B-040C 1130.98	163B-040C 1256.48	1	0	629

CPVC - True Union SR Threaded Ends

Size	EPDM	Viton®	Std Pk	Mstr Pk	Disc Code
1/2	162B-005CSR 134.68	163B-005CSR 148.45	1	12	629
3/4	162B-007CSR 146.93	163B-007CSR 162.22	1	8	629
1	162B-010CSR 162.22	163B-010CSR 179.06	1	8	629
1-1/4	162B-012CSR 255.57	163B-012CSR 281.60	1	4	629
1-1/2	162B-015CSR 286.19	163B-015CSR 313.72	1	0	629
2	162B-020CSR 351.99	163B-020CSR 387.19	1	0	629
3	162B-030CSR 713.18	163B-030CSR 783.59	1	0	629
4	162B-040CSR 1196.80	163B-040CSR 1322.30	1	0	629

NOT FOR USE WITH COMPRESSED AIR OR GAS

Y-Check Valve Repair Kits



All Kits include:

- 1-Seat
- 1-Bonnet O-ring
- 1-Plug O-ring

All Union Kits include:

- 1-Seat
- 1-Bonnet O-ring
- 1-Plug O-ring
- 2-End Connector O-rings

Y-Check Valve - Seat & O-ring Repair Kits

Size	Standard EPDM O-ring	Standard Viton® O-ring	True Union EPDM O-ring	True Union Viton® O-ring	Std Pk	Mstr Pk	Disc Code
1/2	YC-ERK-005 3.32	YC-VRK-005 9.80	YC-UERK-005 3.88	YC-UVRK-005 11.76	1	10	299
3/4	YC-ERK-007 3.80	YC-VRK-007 10.57	YC-UERK-007 4.49	YC-UVRK-007 13.15	1	10	299
1	YC-ERK-010 3.88	YC-VRK-010 14.35	YC-UERK-010 4.72	YC-UVRK-010 19.03	1	10	299
1-1/4	YC-ERK-012 4.06	YC-VRK-012 26.70	YC-UERK-012 5.89	YC-UVRK-012 33.39	1	10	299
1-1/2	YC-ERK-015 7.05	YC-VRK-015 29.16	YC-UERK-015 9.89	YC-UVRK-015 41.51	1	10	299
2	YC-ERK-020 9.48	YC-VRK-020 34.90	YC-UERK-020 13.09	YC-UVRK-020 50.34	1	10	299
3	YC-ERK-030 16.36	YC-VRK-030 91.55	YC-UERK-030 28.43	YC-UVRK-030 116.16	1	10	299
4	YC-ERK-040 21.18	YC-VRK-040 131.80	YC-UERK-040 31.50	YC-UVRK-040 162.61	1	10	299

NOT FOR USE WITH COMPRESSED AIR OR GAS

Made in the U.S.A.

Progressive Products from Spears® Innovation and Technology

Page 22



Butterfly Check Valves



Wafer



Flanged



Spigot



Threaded



Grooved

Pressure Rating @ 73°F (23°C), Water

2" - 8"	150 psi
10" - 16"	100 psi
18" - 24"	50 psi

Maximum Service Temperature

PVC = 140°F (60°C)
CPVC = 200°F (93°C)

Temperature/Pressure De-ratings Apply

General Installation Information: Butterfly Check Valve seating may be affected by normal system turbulence. Flow velocities should be limited to approximately 5 feet per second. Valves should be installed at least 5 pipe diameters away from any fitting, pump or other source of turbulence. If used as a foot valve, do not place near bottom of a tank. Butterfly type check valves should not be used in continuous cycling applications, such as with reciprocating pumps. This can result in premature failure of sealing membrane. In horizontal installations, always orient the Hinge Post Bolts visible on the external body in a vertical (top and bottom) position, perpendicular to flow. In vertical installations downstream from an elbow, flow velocities can be higher on the outer radius of the elbow. To avoid uneven butterfly plate loading, the Hinge Post Bolts should align with crotch and outer radius of elbow and NOT from side to side of the elbow.

PVC

Size	EPDM	Viton®	Std Pk	Mstr Pk	Disc Code
------	------	--------	--------	---------	-----------

Wafer

2	5420-020 385.09	5430-020 424.33	1	18	289
2-1/2	5420-025 530.69	5430-025 584.85	1	0	289
3	5420-030 678.83	5430-030 748.05	1	8	289
4	5420-040 923.19	5430-040 1017.36	1	4	289
6	5420-060 1399.61	5430-060 1542.36	1	0	289
8	5420-080 2374.63	5430-080 2616.83	1	0	289
10	5420-100 4366.31	5430-100 4846.59	1	0	289
12	5420-120 6156.44	5430-120 6833.66	1	0	289
14	5420-140 8793.94	---	1	0	289
16	5420-160 12212.80	---	1	0	289
18	5420-180 15264.85	---	1	0	289
20	5420-200 19081.05	---	1	0	289
24	5420-240 27256.74	---	1	0	289

Flanged Ends

2	5423-020 491.20	5433-020 528.24	1	8	289
2-1/2	5423-025 639.32	5433-025 696.11	1	0	289
3	5423-030 918.27	5433-030 1009.59	1	0	289
4	5423-040 1192.26	5433-040 1330.47	1	0	289
6	5423-060 1932.78	5433-060 2211.72	1	0	289
8	5423-080 2769.57	5433-080 3268.20	1	0	289
10	5423-100 5099.79	5433-100 5815.62	1	0	289
12	5423-120 7225.10	5433-120 7685.85	1	0	289
14	5423-140 10187.39	5433-140 10836.99	4	0	289
16	5423-160 14338.77	5433-160 15481.40	1	0	289
18	5423-180 18319.43	5433-180 19595.64	1	0	289
20	5423-200 24077.89	5433-200 25783.73	1	0	289
24	5423-240 31537.47	5433-240 33924.26	1	0	289

Spigot (Plain End)

2	5427-020 209.82	5437-020 246.84	1	12	289
2-1/2	5427-025 288.81	5437-025 345.60	1	12	289

NOT FOR USE WITH COMPRESSED AIR OR GAS

Butterfly Check Valves



PVC (continued)

Size	EPDM	Viton®	Std Pk	Mstr Pk	Disc Code
Spigot (Plain End)					
3	5427-030 387.54	5437-030 478.87	1	8	289
4	5427-040 508.50	5437-040 646.74	1	4	289
6	5427-060 1081.16	5437-060 1360.10	1	0	289
8	5427-080 1611.90	5437-080 2110.49	1	0	289
10	5427-100 3942.07	5437-100 4657.91	1	0	289
12	5427-120 5339.21	5437-120 6259.09	1	0	289
14	5427-140 7125.66	5437-140 8187.78	1	0	289
16	5427-160 10720.62	5437-160 12569.19	1	0	289
18	5427-180 13400.78	5437-180 15710.07	1	0	289
20	5427-200 16750.52	5437-200 19636.33	1	0	289
24	5427-240 23929.28	5437-240 28050.93	1	0	289

Threaded Ends

2	5421A-020 204.89	5431A-020 241.91	1	4	289
2-1/2	5421A-025 278.94	5431A-025 335.69	1	8	289
3	5421A-030 380.15	5431A-030 471.46	1	8	289
4	5421A-040 498.63	5431A-040 636.85	1	4	289
6	5421A-060 1061.43	5431A-060 1340.35	1	0	289
8	5421A-080 1594.63	5431A-080 2093.22	1	0	289
10	5421A-100 3934.01	5431A-100 4651.01	1	0	289
12	5421A-120 5332.63	5431A-120 6252.52	1	0	289

Grooved Ends

2	542G-020 232.03	543G-020 269.05	1	12	289
2-1/2	542G-025 303.62	543G-025 360.38	1	8	289
3	542G-030 399.88	543G-030 491.20	1	8	289
4	542G-040 538.13	543G-040 676.35	1	4	289
6	542G-060 1125.60	543G-060 1404.55	1	0	289
8	542G-080 1661.24	543G-080 2159.88	1	0	289
10	542G-100 4021.06	543G-100 4736.90	1	0	289
12	542G-120 5445.34	543G-120 6366.09	1	0	289

CPVC

Size	EPDM	Viton®	Std Pk	Mstr Pk	Disc Code
Wafer					
2	5420-020C 596.86	5430-020C 662.52	1	0	290
2-1/2	5420-025C 822.59	5430-025C 871.77	1	0	290
3	5420-030C 1052.17	5430-030C 1167.91	1	0	290
4	5420-040C 1430.98	5430-040C 1588.37	1	0	290
6	5420-060C 2169.38	5430-060C 2408.02	1	0	290
8	5420-080C 3680.67	5430-080C 4085.54	1	0	290
10	5420-100C 7915.72	5430-100C 8707.30	1	0	290
12	5420-120C 13940.65	5430-120C 15334.72	1	0	290

Flanged Ends

2	5423-020C 760.27	5433-020C 797.30	1	8	290
2-1/2	5423-025C 1216.93	5433-025C 1273.70	1	0	290
3	5423-030C 1300.85	5433-030C 1392.19	1	0	290
4	5423-040C 1523.01	5433-040C 1661.24	1	0	290
6	5423-060C 2685.64	5433-060C 2964.59	1	0	290
8	5423-080C 4302.47	5433-080C 4801.11	1	0	290
10	5423-100C 8131.01	5433-100C 8846.85	1	0	290
12	5423-120C 14645.18	5433-120C 15565.94	1	0	290
14	5423-140C 20921.33	5433-140C 22236.76	1	0	290
16	5423-160C 29055.80	5433-160C 30884.37	1	0	290
18	5423-180C 36319.73	5433-180C 38605.48	1	0	290
20	5423-200C 51885.14	5433-200C 55149.57	1	0	290
24	5423-240C 64854.98	5433-240C 68936.72	1	0	289

Spigot (Plain End)

2	5427-020C 399.88	5437-020C 436.91	1	12	290
2-1/2	5427-025C 540.60	5437-025C 597.35	1	12	290
3	5427-030C 550.47	5437-030C 640.97	1	8	290
4	5427-040C 691.15	5437-040C 829.40	1	4	290
6	5427-060C 1478.60	5437-060C 1757.54	1	0	290
8	5427-080C 2219.12	5437-080C 2717.74	1	0	290
10	5427-100C 5546.55	5437-100C 6262.43	1	0	290



Butterfly Check Valves

CPVC (continued)

Size	EPDM	Viton®	Std Pk	Mstr Pk	Disc Code
------	------	--------	--------	---------	-----------

Spigot (Plain End)

12	5427-120C 9101.10	5437-120C 10021.00	1	0	290
14	5427-140C 9519.26	5437-140C 19882.22	1	0	290
16	5427-160C 12588.10	5437-160C 13067.26	1	0	290
18	5427-180C 19142.33	5437-180C 21970.47	1	0	290
20	5427-200C 23928.86	5437-200C 27460.38	1	0	290
24	5427-240C 24784.56	5437-240C 68936.72	1	0	290

Threaded Ends

2	5421A-020C 397.44	5431A-020C 459.14	1	12	290
2-1/2	5421A-025C 538.45	5431A-025C 595.72	1	8	290
3	5421A-030C 547.17	5431A-030C 638.49	1	8	290
4	5421A-040C 687.87	5431A-040C 826.10	1	4	290
6	5421A-060C 1467.06	5431A-060C 1745.17	1	0	290
8	5421A-080C 2208.90	5431A-080C 2707.54	1	0	290
10	5421A-100C 5537.82	5431A-100C 6253.69	1	0	290
12	5421A-120C 9086.60	5431A-120C 10007.34	1	0	290

Grooved Ends

2	542G-020C 422.12	543G-020C 488.95	1	12	290
2-1/2	542G-025C 560.33	543G-025C 617.12	1	8	290
3	542G-030C 569.36	543G-030C 660.71	1	8	290
4	542G-040C 730.65	543G-040C 869.53	1	4	290
6	542G-060C 1530.43	543G-060C 1809.37	1	0	290
8	542G-080C 2268.66	543G-080C 2767.28	1	0	290
10	542G-100C 5630.49	543G-100C 6346.32	1	0	290
12	542G-120C 9384.97	543G-120C 10305.68	1	0	290

NOT FOR USE WITH COMPRESSED AIR OR GAS

Butterfly Check Valve Repair Kits



PVC Butterfly Check Valve Repair Kits

Size	EPDM	Viton®	Std Pk	Mstr Pk	Disc Code
2	BFC-ERK-020 148.17	BFC-VRK-020 175.06	1	10	299
2-1/2	BFC-ERK-025 201.78	BFC-VRK-025 242.90	1	0	299
3	BFC-ERK-030 274.85	BFC-VRK-030 340.63	1	10	299
4	BFC-ERK-040 360.71	BFC-VRK-040 460.51	1	10	299
6	BFC-ERK-060 767.78	BFC-VRK-060 969.57	1	10	299
8	BFC-ERK-080 1153.67	BFC-VRK-080 1514.05	1	10	299
10	BFC-ERK-100 2845.64	BFC-VRK-100 3364.20	1	0	299
12	BFC-ERK-120 3857.29	BFC-VRK-120 4522.60	1	0	299

CPVC Butterfly Check Valve Repair Kits

Size	EPDM	Viton®	Std Pk	Mstr Pk	Disc Code
2	BFC-ERK-020C 287.49	BFC-VRK-020C 314.23	1	10	299
2-1/2	BFC-ERK-025C 389.52	BFC-VRK-025C 430.96	1	10	299
3	BFC-ERK-030C 396.00	BFC-VRK-030C 461.78	1	10	299
4	BFC-ERK-040C 497.52	BFC-VRK-040C 597.63	1	10	299
6	BFC-ERK-060C 1061.15	BFC-VRK-060C 1262.30	1	10	299
8	BFC-ERK-080C 1597.71	BFC-VRK-080C 1958.46	1	10	299
10	BFC-ERK-100C 4005.64	BFC-VRK-100C 4523.55	1	0	299
12	BFC-ERK-120C 6572.78	BFC-VRK-120C 7238.72	1	0	299

PVC & CPVC Butterfly Check Valve Repair Kit is an internal assembly including:

- 1-Flex Seal Gasket Seat
- 1-Hinge Post
- 2-Flapper Plates
- 2-Flapper Covers
- 1-Post Strip
- 2-Seat Post O-rings
- Plastic Assembly Screws

Use Existing Hinge Post Bolts

NOT FOR USE WITH COMPRESSED AIR OR GAS

Made in the U.S.A.

Progressive Products from Spears® Innovation and Technology

Page 26



Industrial PVC Backwater Valves

Backwater Valves are designed to prevent backflow in numerous applications where easy service access for maintenance and cleaning is needed. Excellent for use in sanitary or storm sewer drainage systems to prevent waste back up due to inadequate drainage, for balancing multi-level ponds, aquaculture features or storage tank systems, and many other applications. Spears® Backwater Valve has been engineered for improved function and easier service, especially in buried service with use of optional Service-Access Extension available either preassembled with valve or as an add-on kit.

- Replaceable internal flapper assembly with EPDM Seat.
- Service-Access Extension available either preassembled with valve, as an add-on kit, or as valve & extension kit components with user supplied pipe.
- Direct Connection to ASTM D 2665 PVC DWV or other IPS size pipe. Spears® fabricated IPS x Sewer Adapters or DWV x Sewer & Drain Adapter Bushings are available for connection to ASTM D 3034 & ASTM D 2729 Sewer pipe.
- Pressure Rated to 43 psi (100 feet of head) @ 73°F (23°C).
- All extension kits can be cut shorter for custom application.
- Conforms to ASME/ANSI A112.14.1 for Backwater Valves.

PVC Backwater Valves

Soc x Soc - Valve Only



Part Number	Size	Std Pk	Mstr Ctn	Disc Code	Price Each
S275P	2	1	12	055	56.10
S375P	3	2	0	055	56.21
S475P	4	1	0	055	62.27
S675P	6	1	0	055	265.30

PVC Backwater Valves with Extension Kit to Premade Length

Soc x Soc - Assembled with Extension



Part Number	Size	Std Pk	Mstr Ctn	Disc Code	Price Each
S275P-120 ¹	2 x 12HT	1	0	055	169.21
S275P-160 ¹	2 x 16HT	1	0	055	182.01
S275P-200 ¹	2 x 20HT	1	0	055	194.80
S275P-240 ¹	2 x 24HT	1	0	055	207.60
S275P-360 ¹	2 x 36HT	1	0	055	218.04
S275P-480 ¹	2 x 48HT	1	0	055	239.64
S375P-120 ¹	3 x 12HT	1	0	055	169.21
S375P-160 ¹	3 x 16HT	1	0	055	182.01
S375P-200 ¹	3 x 20HT	1	0	055	194.80
S375P-240 ¹	3 x 24HT	1	0	055	207.60
S375P-360 ¹	3 x 36HT	1	0	055	218.04
S375P-480 ¹	3 x 48HT	1	0	055	239.64
S475P-120 ¹	4 x 12HT	1	0	055	219.79
S475P-160 ¹	4 x 16HT	1	0	055	237.11
S475P-200 ¹	4 x 20HT	1	0	055	252.89
S475P-240 ¹	4 x 24HT	1	0	055	269.66
S475P-360 ¹	4 x 36HT	1	0	055	283.20
S475P-480 ¹	4 x 48HT	1	0	055	311.22
S675P-120 ¹	6 x 12HT	1	0	055	461.53
S675P-160 ¹	6 x 16HT	1	0	055	497.93
S675P-200 ¹	6 x 20HT	1	0	055	531.07
S675P-240 ¹	6 x 24HT	1	0	055	566.35
S675P-360 ¹	6 x 36HT	1	0	055	594.74
S675P-480 ¹	6 x 48HT	1	0	055	653.55

¹ - Size designates nominal valve size x extension height (HT-top of valve to top of extension, inches)

NOT FOR USE WITH COMPRESSED AIR OR GAS

Industrial PVC Backwater Valves

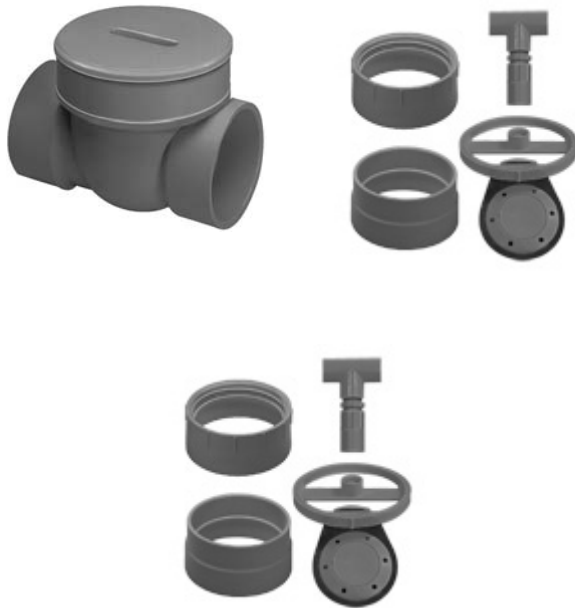


PVC Service-Access Extension Kit: includes factory assembled internal extension pipe with T-handle and external riser extension housing assembly with top access adapter. Requires solvent cement assembly to existing valve and uses existing threaded Access Plug and Flap Assembly. Standard Extensions are available in convenient increments of 12", 16", 20", 24", 36", and 48" (measured from top of valve to top of extension). Contact Spears® for pricing on custom cut lengths. All extension kits can be cut shorter in the field for custom fits prior to cementing access adapter in place.

PVC Service-Access Extension Kit Only to Premade Length

Part Number	Size	Std Pk	Mstr Ctn	Disc Code	Price Each
SAEK-020-120 ¹	2 x 12HT	1	0	055	52.77
SAEK-020-160 ¹	2 x 16HT	1	0	055	54.28
SAEK-020-200 ¹	2 x 20HT	1	0	055	55.72
SAEK-020-240 ¹	2 x 24HT	1	0	055	58.39
SAEK-020-360 ¹	2 x 36HT	1	0	055	61.15
SAEK-020-480 ¹	2 x 48HT	1	0	055	64.14
SAEK-030-120 ¹	3 x 12HT	1	0	055	57.23
SAEK-030-160 ¹	3 x 16HT	1	0	055	64.60
SAEK-030-200 ¹	3 x 20HT	1	0	055	68.44
SAEK-030-240 ¹	3 x 24HT	1	0	055	77.13
SAEK-030-360 ¹	3 x 36HT	1	0	055	91.24
SAEK-030-480 ¹	3 x 48HT	1	0	055	107.91
SAEK-040-120 ¹	4 x 12HT	1	0	055	85.34
SAEK-040-160 ¹	4 x 16HT	1	0	055	96.21
SAEK-040-200 ¹	4 x 20HT	1	0	055	118.67
SAEK-040-240 ¹	4 x 24HT	1	0	055	129.95
SAEK-040-360 ¹	4 x 36HT	1	0	055	163.46
SAEK-040-480 ¹	4 x 48HT	1	0	055	188.71
SAEK-060-120 ¹	6 x 12HT	1	0	055	152.89
SAEK-060-160 ¹	6 x 16HT	1	0	055	173.77
SAEK-060-200 ¹	6 x 20HT	1	0	055	197.04
SAEK-060-240 ¹	6 x 24HT	1	0	055	226.07
SAEK-060-360 ¹	6 x 36HT	1	0	055	280.62
SAEK-060-480 ¹	6 x 48HT	1	0	055	348.34

¹ - Size designates nominal valve size x extension height (HT-top of valve to top of extension, inches)



PVC Backwater Valve with Extension Components

Soc x Soc - Components

Must be assembled with user supplied pipe (see Table 1)

Part Number	Size	Std Pk	Mstr Ctn	Disc Code	Price Each
S275P-AK	2	1	0	055	82.65
S375P-AK	3	1	0	055	82.65
S475P-AK	4	1	0	055	96.68
S675P-AK	6	1	0	055	342.36

PVC Backwater Valve Extension Components Only

Must be assembled with user supplied pipe (see Table 1)

Part Number	Size	Std Pk	Mstr Ctn	Disc Code	Price Each
S275P-ECK	2	1	8	055	44.01
S375P-ECK	3	1	0	055	44.01
S475P-ECK	4	1	0	055	57.35
S675P-ECK	6	1	0	055	120.49

NOT FOR USE WITH COMPRESSED AIR OR GAS

Made in the U.S.A.

Progressive Products from Spears® Innovation and Technology

Page 28



Industrial PVC Backwater Valves

Industrial Backwater Valve Flapper Repair Kit

Part Number	Size	Std Pk	Mstr Ctn	Disc Code	Price Each
Complete Flapper Assembly replacement					
S275P-FRK	2	1	10	055	32.76
S375P-FRK	3	1	10	055	41.31
S475P-FRK	4	1	10	055	48.11
S675P-FRK	6	1	5	055	85.67



Table 1: User Supplied Pipe Requirements For Use With Extension Components

Valve Size	Riser Pipe Type Options	T-Handle Extension Pipe Type Options
2"	4" Class 125 PVC 4" Sch 40 PVC	1" PVC IPS pipe (any Sch 40, Sch 80, Class pipe, etc.)
3"	5" Class 125 PVC 5" Sch 40 PVC 6" D3034 (SDR 35) PVC Sewer Pipe	
4"	8" Class 125 PVC 8" Sch 40 PVC	
6"	10" Class 125 PVC 10" Sch 40 PVC	

Note: Sch 80 PVC pipe may also be used, except for 3" Riser. ABS pipe may also be used. However, special cement for joining ABS to PVC must be used.



PVC Backwater Valve Metric Adapters

Part Number	Size	Std Pk	Mstr Ctn	Disc Code	Price Each
-------------	------	--------	----------	-----------	------------

Metric Socket x ASTM Spigot

S275MA-063	63mm x 2	50	0	055	14.52
S375MA-090	90mm x 3	25	0	055	15.60
S475MA-110	110mm x 4	10	0	055	18.48
S675MA-160	160mm x 6	4	0	055	42.65

NOT FOR USE WITH COMPRESSED AIR OR GAS

Spears® Manufacturing Company

Watch for New Product Announcements from Spears® Innovation and Technology



SPEARS® MANUFACTURING COMPANY • CORPORATE OFFICE

15853 Olden St., Sylmar, CA 91342 • PO Box 9203, Sylmar, CA 91392
(818) 364-1611 • www.spearsmfg.com



PACIFIC SOUTHWEST

15860 Olden St.
Sylmar (Los Angeles), CA 91342
(818) 364-1611 • (800) 862-1499
Fax (818) 367-3014

ROCKY MOUNTAIN

4880 Florence St.
Denver, CO 80238
(303) 371-9430 • (800) 777-4154
Fax (303) 375-9546

UTAH

5395 West 1520 South
Salt Lake City, UT 84104
(303) 371-9430 • (800) 777-4154
Fax (303) 375-9546

SOUTHEAST

4205 Newpoint Pl., Suite 100
Lawrenceville (Atlanta), GA 30043
(678) 985-1263 • (800) 662-6326
Fax (678) 985-5642

MIDWEST

1 Gateway Ct., Suite A
Bolingbrook (Chicago), IL 60440
(630) 759-7529 • (800) 662-6330
Fax (630) 759-7515

NORTHWEST

4103 C St. NE Suite 200
Auburn (Seattle), WA 98002
(253) 939-4433 • (800) 347-7327
Fax (253) 939-7557

SOUTH CENTRAL

1000 Lakeside Parkway
Flower Mound, TX 75028
(469) 528-3000 • (800) 441-1437
Fax (469) 528-3001

NORTHEAST

590 Industrial Dr., Suite 100
Lewisberry (Harrisburg), PA 17339-9532
(717) 938-8844 • (800) 233-0275
Fax (717) 938-6547

FLORIDA

9563 Parksouth Court
Orlando, FL 32837
(407) 843-1960 • (800) 327-6390
Fax (407) 425-3563

INTERNATIONAL SALES

15853 Olden St.
Sylmar (Los Angeles), CA 91342
(818) 364-1611 • Fax (818) 898-3774

AUTHORIZED DISTRIBUTOR